

DATASHEET

SFRP4 Rabbit Monoclonal Antibody(C1451)

CAT. NO. AMA01063

KEY FEATURES

Target	SFRP4	Source / Host	Rabbit
Reactivity	Human, Mouse, Rat	Clonality	Monoclonal
Applications	WB, IHC	Conjugation	Unconjugated
Form / Buffer	Liquid in PBS, pH 7.4, containing 50% glycerol, 0.2% BSA and 0.01% sodium azide.	Storage	at-20°C

BACKGROUND

Soluble frizzled-related proteins (sFRPs) function as modulators of Wnt signaling through direct interaction with Wnts. They have a role in regulating cell growth and differentiation in specific cell types . SFRP4 plays a role in bone morphogenesis. May also act as a regulator of adult uterine morphology and function. May also increase apoptosis during ovulation possibly through modulation of FZ1/FZ4/WNT4 signaling . Has phosphaturic effects by specifically inhibiting sodium-dependent phosphate uptake function as modulators of Wnt signaling through direct interaction with Wnts. They have a role in regulating cell growth and differentiation in specific cell types . SFRP4 plays a role in bone morphogenesis. May also act as a regulator of adult uterine morphology and function.

APPLICATION

To ensure optimal assay performance, AREX recommends conducting reagent titration tailored to each testing system for optimal detection results.

WB	1:500 - 1:1000
IHC	1:50 - 1:200

*Results are sample-specific. Please refer to your local assay conditions and test parameters for reference.

PRODUCT OVERVIEW

Description	Recombinant rabbit monoclonal antibody to SFRP4
Specificity	Recognizes endogenous levels of SFRP4 protein
Antibody Type	Primary antibody, Recombinant
Immunogen	KLH-conjugated synthetic peptide encompassing a sequence within human SFRP4 protein. The exact sequence is proprietary.
Purification	The antibody was purified by immunogen affinity chromatography.
Molecular Weight	Predicted: 39 kD; Observed: 50 kD
Form/Buffer	Liquid in PBS, pH 7.4, containing 50% glycerol, 0.2% BSA and 0.01% sodium azide.
Alternative Names	FRPHE; Secreted frizzled-related protein 4; sFRP-4; Frizzled protein, human endometrium; FrpHE
Gene Symbol	SFRP4
Entrez Gene	6424(Human); 20379(Mouse); 89803(Rat)
SwissProt	Q6FHJ7(Human); Q9Z1N6(Mouse); Q9JLS4(Rat)

*AREX continuously optimizes our products. Webpage content may not reflect the latest updates. For inquiries, please contact info@arexbio.com or your local distributor.

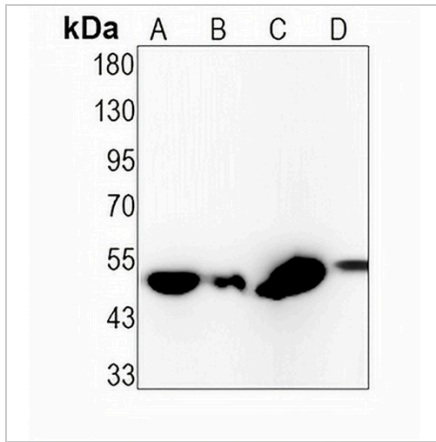
*Clone Number, Reactivity, Source/Host and Clonality can be found in the product name and Key Features section above.

DATASHEET

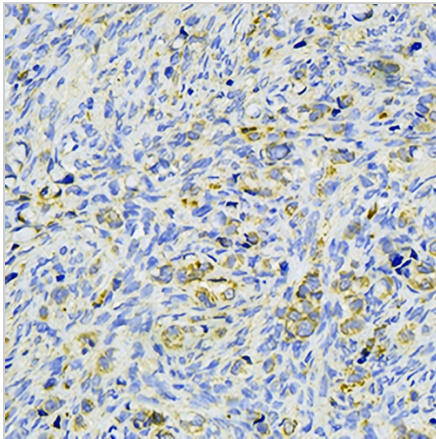
SFRP4 Rabbit Monoclonal Antibody(C1451)

CAT. NO. AMA01063

DATA



Western blot analysis of SFRP4 expression in mouse kidney (A), mouse muscle (B), rat kidney (C), rat muscle (D) whole cell lysates. (Predicted band size: 39 kD; Observed band size: 50 kD)



Immunohistochemical analysis of SFRP4 staining in human stomach cancer formalin fixed paraffin embedded tissue section. The section was pre-treated using heat mediated antigen retrieval with sodium citrate buffer (pH 6.0). The section was then incubated with the antibody at room temperature and detected using an HRP conjugated compact polymer system. DAB was used as the chromogen. The section was then counterstained with haematoxylin and mounted with DPX.

STORAGE

Store at 4°C short term. For long term storage, store at -20°C, avoiding freeze/thaw cycles.

NOTE

For Research Use Only. Not for diagnostic, therapeutics, prophylactic or in vivo use.