

DATASHEET

MBD3 Rabbit Monoclonal Antibody(C1455)

CAT. NO. AMA01067

KEY FEATURES

Target	MBD3	Source / Host	Rabbit
Reactivity	Human	Clonality	Monoclonal
Applications	WB, IF/ICC	Conjugation	Unconjugated
Form / Buffer	Liquid in PBS, pH 7.4, containing 50% glycerol, 0.2% BSA and 0.01% sodium azide.	Storage	at-20°C

BACKGROUND

Acts as a component of the histone deacetylase NuRD complex which participates in the remodeling of chromatin . Acts as transcriptional repressor and plays a role in gene silencing . Does not bind to methylated DNA by itself . Binds to a lesser degree DNA containing unmethylated CpG dinucleotides . Recruits histone deacetylases and DNA methyltransferases.

APPLICATION

To ensure optimal assay performance, AREX recommends conducting reagent titration tailored to each testing system for optimal detection results.

WB	1:500 - 1:1000
IF/ICC	1:50 - 1:200

*Results are sample-specific. Please refer to your local assay conditions and test parameters for reference.

PRODUCT OVERVIEW

Description	Recombinant rabbit monoclonal antibody to MBD3
Specificity	Recognizes endogenous levels of MBD3 protein
Antibody Type	Primary antibody, Recombinant
Immunogen	KLH-conjugated synthetic peptide encompassing a sequence within human MBD3 protein. The exact sequence is proprietary.
Purification	The antibody was purified by immunogen affinity chromatography.
Molecular Weight	Predicted: 32 kD; Observed: 33 kD
Form/Buffer	Liquid in PBS, pH 7.4, containing 50% glycerol, 0.2% BSA and 0.01% sodium azide.
Alternative Names	Methyl-CpG-binding domain protein 3; Methyl-CpG-binding protein MBD3
Gene Symbol	MBD3
Entrez Gene	53615(Human)
SwissProt	O95983(Human)

*AREX continuously optimizes our products. Webpage content may not reflect the latest updates. For inquiries, please contact info@arexbio.com or your local distributor.

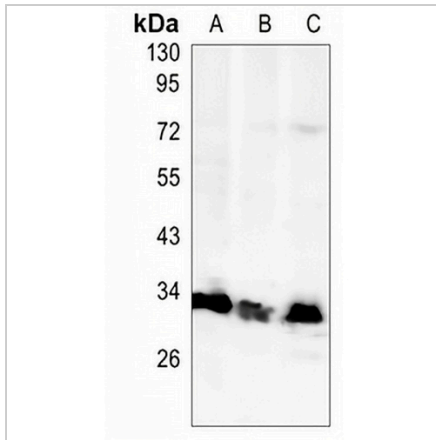
*Clone Number, Reactivity, Source/Host and Clonality can be found in the product name and Key Features section above.

DATASHEET

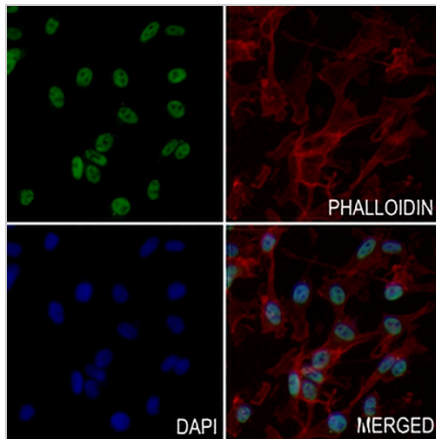
MBD3 Rabbit Monoclonal Antibody(C1455)

CAT. NO. AMA01067

DATA



Western blot analysis of MBD3 expression in K562 (A), HeLa (B), HepG2 (C) whole cell lysates. (Predicted band size: 32 kD; Observed band size: 33 kD)



Immunofluorescent analysis of MBD3 staining in MDAMB231 cells. Formalin-fixed cells were permeabilized with 0.1% Triton X-100 in TBS for 5-10 minutes and blocked with 3% BSA-PBS for 30 minutes at room temperature. Cells were probed with the primary antibody in 3% BSA-PBS and incubated overnight at 4 °C in a humidified chamber. Cells were washed with PBST and incubated with a AREX® Fluor 488 -conjugated secondary antibody (green) in PBS at room temperature in the dark. Phalloidin - AREX® Fluor 594 was used to stain Actin filaments (red). DAPI was used to stain the cell nuclei (blue).

STORAGE

Store at 4°C short term. For long term storage, store at -20°C, avoiding freeze/thaw cycles.

NOTE

For Research Use Only. Not for diagnostic, therapeutics, prophylactic or in vivo use.