

## DATASHEET

# IL-15 Rabbit Monoclonal Antibody(C1470)

CAT. NO. AMA01082

### KEY FEATURES

|               |  |               |              |
|---------------|--|---------------|--------------|
| Target        | IL-15  | Source / Host | Rabbit       |
| Reactivity    | Human, Mouse, Rat  | Clonality     | Monoclonal   |
| Applications  | WB   | Conjugation   | Unconjugated |
| Form / Buffer | Liquid in PBS, pH 7.4, containing 50% glycerol, 0.2% BSA and 0.01% sodium azide. | Storage       | at-20°C      |

### BACKGROUND

Cytokine that plays a major role in the development of inflammatory and protective immune responses to microbial invaders and parasites by modulating immune cells of both the innate and adaptive immune systems . Stimulates the proliferation of natural killer cells, T-cells and B-cells and promotes the secretion of several cytokines . In monocytes, induces the production of IL8 and monocyte chemotactic protein 1/CCL2, two chemokines that attract neutrophils and monocytes respectively to sites of infection . Unlike most cytokines, which are secreted in soluble form, IL15 is expressed in association with its high affinity IL15RA on the surface of IL15-producing cells and delivers signals to target cells that express IL2RB and IL2RG receptor subunits .

### APPLICATION

To ensure optimal assay performance, AREX recommends conducting reagent titration tailored to each testing system for optimal detection results.

|    |                |
|----|----------------|
| WB | 1:500 - 1:1000 |
|----|----------------|

\*Results are sample-specific. Please refer to your local assay conditions and test parameters for reference.

### PRODUCT OVERVIEW

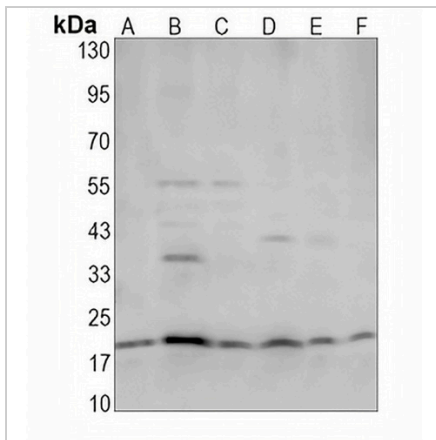
|                   |   |
|-------------------|---|
| Description       | Recombinant rabbit monoclonal antibody to IL-15   |
| Specificity       | Recognizes endogenous levels of IL-15 protein   |
| Antibody Type     | Primary antibody, Recombinant   |
| Immunogen         | KLH-conjugated synthetic peptide encompassing a sequence within human IL-15 protein. The exact sequence is proprietary. |
| Purification      | The antibody was purified by immunogen affinity chromatography.   |
| Molecular Weight  | Predicted: 18 kD; Observed: 18 kD   |
| Form/Buffer       | Liquid in PBS, pH 7.4, containing 50% glycerol, 0.2% BSA and 0.01% sodium azide.  |
| Alternative Names | Interleukin-15; IL-15   |
| Gene Symbol       | IL15  |
| Entrez Gene       | 3600(Human); 16168(Mouse); 25670(Rat)   |
| SwissProt         | P40933(Human); P48346(Mouse); P97604(Rat)   |

\*AREX continuously optimizes our products. Webpage content may not reflect the latest updates. For inquiries, please contact [info@arexbio.com](mailto:info@arexbio.com) or your local distributor.

\*Clone Number, Reactivity, Source/Host and Clonality can be found in the product name and Key Features section above.

**DATASHEET****IL-15 Rabbit Monoclonal Antibody(C1470)**

CAT. NO. AMA01082

**DATA**

Western blot analysis of IL-15 expression in HeLa (A), K562 (B), PC3 (C), mouse liver (D), rat liver (E), rat kidney (F) whole cell lysates. (Predicted band size: 18 kD; Observed band size: 18 kD)

**STORAGE**

Store at 4°C short term. For long term storage, store at -20°C, avoiding freeze/thaw cycles.

**NOTE**

For Research Use Only. Not for diagnostic, therapeutics, prophylactic or in vivo use.