

DATASHEET

Lactoferrin Rabbit Monoclonal Antibody(C1473)

CAT. NO. AMA01085

KEY FEATURES

Target	Lactoferrin	Source / Host	Rabbit
Reactivity	Human, Mouse, Rat	Clonality	Monoclonal
Applications	WB	Conjugation	Unconjugated
Form / Buffer	Liquid in PBS, pH 7.4, containing 50% glycerol, 0.2% BSA and 0.01% sodium azide.	Storage	at-20°C

BACKGROUND

Transferrins are iron binding transport proteins which can bind two Fe(3+) ions in association with the binding of an anion, usually bicarbonate.

APPLICATION

To ensure optimal assay performance, AREX recommends conducting reagent titration tailored to each testing system for optimal detection results.

WB	1:500 - 1:1000
----	----------------

*Results are sample-specific. Please refer to your local assay conditions and test parameters for reference.

PRODUCT OVERVIEW

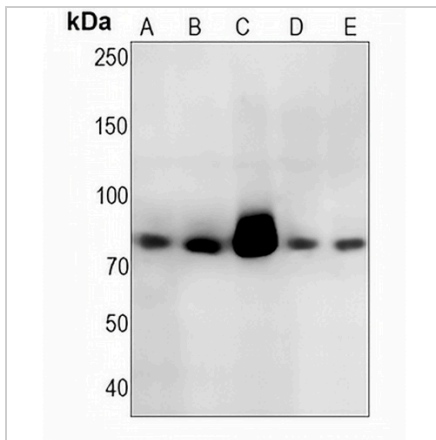
Description	Recombinant rabbit monoclonal antibody to Lactoferrin
Specificity	Recognizes endogenous levels of Lactoferrin protein
Antibody Type	Primary antibody, Recombinant
Immunogen	KLH-conjugated synthetic peptide encompassing a sequence within human Lactoferrin protein. The exact sequence is proprietary.
Purification	The antibody was purified by immunogen affinity chromatography.
Molecular Weight	Predicted: 78 kD; Observed: 78 kD
Form/Buffer	Liquid in PBS, pH 7.4, containing 50% glycerol, 0.2% BSA and 0.01% sodium azide.
Alternative Names	GIG12; LF; Lactotransferrin; Lactoferrin; Growth-inhibiting protein 12; Talalactoferrin
Gene Symbol	LTF
Entrez Gene	4057(Human); 17002(Mouse)
SwissProt	P02788(Human); P08071(Mouse)

*AREX continuously optimizes our products. Webpage content may not reflect the latest updates. For inquiries, please contact info@arexbio.com or your local distributor.

*Clone Number, Reactivity, Source/Host and Clonality can be found in the product name and Key Features section above.

DATASHEET**Lactoferrin Rabbit Monoclonal Antibody(C1473)**

CAT. NO. AMA01085

DATA

Western blot analysis of Lactoferrin expression in K562 (A), H1792 (B), mouse liver (C), mouse kidney (D), rat liver (E) whole cell lysates. (Predicted band size: 78 kD; Observed band size: 78 kD)

STORAGE

Store at 4°C short term. For long term storage, store at -20°C, avoiding freeze/thaw cycles.

NOTE

For Research Use Only. Not for diagnostic, therapeutics, prophylactic or in vivo use.