

## DATASHEET

# NUDC Rabbit Monoclonal Antibody(C1476)

CAT. NO. AMA01088

### KEY FEATURES

Target	NUDC	Source / Host	Rabbit
Reactivity	Human, Mouse, Rat	Clonality	Monoclonal
Applications	WB	Conjugation	Unconjugated
Form / Buffer	Liquid in PBS, pH 7.4, containing 50% glycerol, 0.2% BSA and 0.01% sodium azide.	Storage	at-20°C

### BACKGROUND

Plays a role in neurogenesis and neuronal migration . Necessary for correct formation of mitotic spindles and chromosome separation during mitosis . Necessary for cytokinesis and cell proliferation .

### APPLICATION

To ensure optimal assay performance, AREX recommends conducting reagent titration tailored to each testing system for optimal detection results.

WB	1:500 - 1:1000
----	----------------

\*Results are sample-specific. Please refer to your local assay conditions and test parameters for reference.

### PRODUCT OVERVIEW

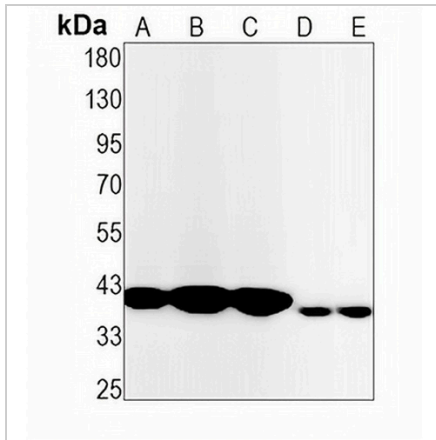
Description	Recombinant rabbit monoclonal antibody to NUDC
Specificity	Recognizes endogenous levels of NUDC protein
Antibody Type	Primary antibody, Recombinant
Immunogen	KLH-conjugated synthetic peptide encompassing a sequence within human NUDC protein. The exact sequence is proprietary.
Purification	The antibody was purified by immunogen affinity chromatography.
Molecular Weight	Predicted: 38 kD; Observed: 42 kD
Form/Buffer	Liquid in PBS, pH 7.4, containing 50% glycerol, 0.2% BSA and 0.01% sodium azide.
Alternative Names	Nuclear migration protein nudC; Nuclear distribution protein C homolog
Gene Symbol	NUDC
Entrez Gene	10726(Human); 18221(Mouse); 29648(Rat)
SwissProt	Q9Y266(Human); O35685(Mouse); Q63525(Rat)

\*AREX continuously optimizes our products. Webpage content may not reflect the latest updates. For inquiries, please contact [info@arexbio.com](mailto:info@arexbio.com) or your local distributor.

\*Clone Number, Reactivity, Source/Host and Clonality can be found in the product name and Key Features section above.

**DATASHEET****NUDC Rabbit Monoclonal Antibody(C1476)**

CAT. NO. AMA01088

**DATA**

Western blot analysis of NUDC expression in HEK293T (A), HepG2 (B), PC3 (C), mouse liver (D), rat liver (E) whole cell lysates. (Predicted band size: 38 kD; Observed band size: 42 kD)

**STORAGE**

Store at 4°C short term. For long term storage, store at -20°C, avoiding freeze/thaw cycles.

**NOTE**

For Research Use Only. Not for diagnostic, therapeutics, prophylactic or in vivo use.