

**DATASHEET**

**Histone H3 (Phospho-S31) Rabbit Monoclonal Antibody(C1493)**

CAT. NO. AMA01105

**KEY FEATURES**

|               |  |               |              |
|---------------|--|---------------|--------------|
| Target        | Histone H3 (Phospho-S31)   | Source / Host | Rabbit       |
| Reactivity    | Human  | Clonality     | Monoclonal   |
| Applications  | WB   | Conjugation   | Unconjugated |
| Form / Buffer | Liquid in PBS, pH 7.4, containing 50% glycerol, 0.2% BSA and 0.01% sodium azide. | Storage       | at-20°C      |

**BACKGROUND**

Variant histone H3 which replaces conventional H3 in a wide range of nucleosomes in active genes. Constitutes the predominant form of histone H3 in non-dividing cells and is incorporated into chromatin independently of DNA synthesis. Deposited at sites of nucleosomal displacement throughout transcribed genes, suggesting that it represents an epigenetic imprint of transcriptionally active chromatin. Nucleosomes wrap and compact DNA into chromatin, limiting DNA accessibility to the cellular machineries which require DNA as a template. Histones thereby play a central role in transcription regulation, DNA repair, DNA replication and chromosomal stability.

**APPLICATION**

To ensure optimal assay performance, AREX recommends conducting reagent titration tailored to each testing system for optimal detection results.

|    |                |
|----|----------------|
| WB | 1:500 - 1:1000 |
|----|----------------|

\*Results are sample-specific. Please refer to your local assay conditions and test parameters for reference.

**PRODUCT OVERVIEW**

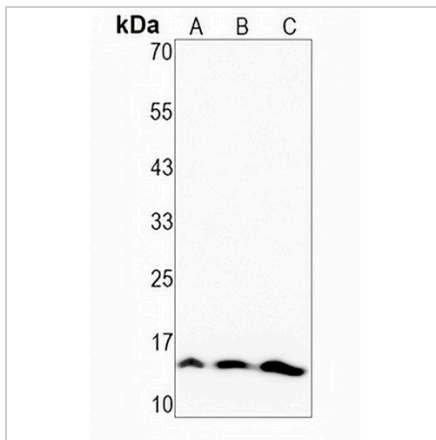
|                   |   |
|-------------------|---|
| Description       | Recombinant rabbit monoclonal antibody to Histone H3 (Phospho-S31)  |
| Specificity       | Recognizes endogenous levels of Histone H3 protein only when phosphorylated at S31  |
| Antibody Type     | Primary antibody, Recombinant   |
| Immunogen         | KLH-conjugated synthetic phosphopeptide corresponding to residues surrounding S31 of human Histone H3 protein. The exact sequence is proprietary. |
| Purification      | The antibody was purified by immunogen affinity chromatography.   |
| Molecular Weight  | Predicted: 15 kD; Observed: 15 kD   |
| Form/Buffer       | Liquid in PBS, pH 7.4, containing 50% glycerol, 0.2% BSA and 0.01% sodium azide.  |
| Alternative Names | H3.3A; H3F3; H3.3B; Histone H3.3  |
| Gene Symbol       | H3F3A; H3F3B  |
| Entrez Gene       | 3020; 3021(Human)   |
| SwissProt         | P84243(Human)   |

\*AREX continuously optimizes our products. Webpage content may not reflect the latest updates. For inquiries, please contact [info@arexbio.com](mailto:info@arexbio.com) or your local distributor.

\*Clone Number, Reactivity, Source/Host and Clonality can be found in the product name and Key Features section above.

**DATASHEET****Histone H3 (Phospho-S31) Rabbit Monoclonal Antibody(C1493)**

CAT. NO. AMA01105

**DATA**

Western blot analysis of Histone H3 (Phospho-S31) expression in HeLa (A), HuT78 (B), MCF7 (C) whole cell lysates. (Predicted band size: 15 kD; Observed band size: 15 kD)

**STORAGE**

Store at 4°C short term. For long term storage, store at -20°C, avoiding freeze/thaw cycles.

**NOTE**

For Research Use Only. Not for diagnostic, therapeutics, prophylactic or in vivo use.