

**DATASHEET**

**Synapsin 1 (Phospho-S9) Rabbit Monoclonal Antibody(C1502)**

CAT. NO. AMA01114

**KEY FEATURES**

Target	Synapsin 1 (Phospho-S9)	Source / Host	Rabbit
Reactivity	Human, Mouse	Clonality	Monoclonal
Applications	WB	Conjugation	Unconjugated
Form / Buffer	Liquid in PBS, pH 7.4, containing 50% glycerol, 0.2% BSA and 0.01% sodium azide.	Storage	at-20°C

**BACKGROUND**

Neuronal phosphoprotein that coats synaptic vesicles, and binds to the cytoskeleton. Acts as a regulator of synaptic vesicles trafficking, involved in the control of neurotransmitter release at the pre-synaptic terminal . Also involved in the regulation of axon outgrowth and synaptogenesis . The complex formed with NOS1 and CAPON proteins is necessary for specific nitric-oxid functions at a presynaptic level .

**APPLICATION**

To ensure optimal assay performance, AREX recommends conducting reagent titration tailored to each testing system for optimal detection results.

WB	1:500 - 1:1000
----	----------------

\*Results are sample-specific. Please refer to your local assay conditions and test parameters for reference.

**PRODUCT OVERVIEW**

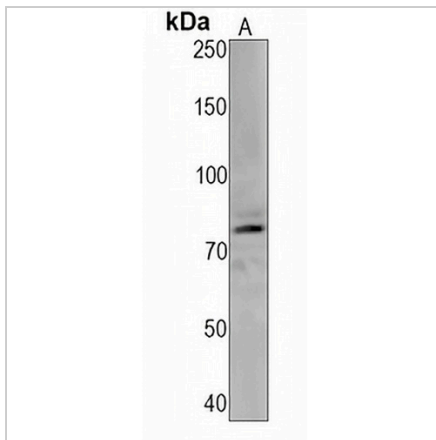
Description	Recombinant rabbit monoclonal antibody to Synapsin 1 (Phospho-S9)
Specificity	Recognizes endogenous levels of Synapsin 1 protein only when phosphorylated at S9
Antibody Type	Primary antibody, Recombinant
Immunogen	KLH-conjugated synthetic phosphopeptide corresponding to residues surrounding S9 of human Synapsin 1 protein. The exact sequence is proprietary.
Purification	The antibody was purified by immunogen affinity chromatography.
Molecular Weight	Predicted: 74 kD; Observed: 77 kD
Form/Buffer	Liquid in PBS, pH 7.4, containing 50% glycerol, 0.2% BSA and 0.01% sodium azide.
Alternative Names	Synapsin-1; Brain protein 4.1; Synapsin I
Gene Symbol	SYN1
Entrez Gene	6853(Human); 20964(Mouse)
SwissProt	P17600(Human); O88935(Mouse)

\*AREX continuously optimizes our products. Webpage content may not reflect the latest updates. For inquiries, please contact [info@arexbio.com](mailto:info@arexbio.com) or your local distributor.

\*Clone Number, Reactivity, Source/Host and Clonality can be found in the product name and Key Features section above.

**DATASHEET****Synapsin 1 (Phospho-S9) Rabbit Monoclonal Antibody(C1502)**

CAT. NO. AMA01114

**DATA**

Western blot analysis of Synapsin 1 (Phospho-S9) expression in mouse brain (A) whole cell lysates. (Predicted band size: 74 kD; Observed band size: 77 kD)

**STORAGE**

Store at 4°C short term. For long term storage, store at -20°C, avoiding freeze/thaw cycles.

**NOTE**

For Research Use Only. Not for diagnostic, therapeutics, prophylactic or in vivo use.