

DATASHEET
PTEN (Phospho-S380) Rabbit Monoclonal Antibody(C1508)
CAT. NO. AMA01120
KEY FEATURES

Target	PTEN (Phospho-S380)	Source / Host	Rabbit
Reactivity	Human, Mouse	Clonality	Monoclonal
Applications	WB	Conjugation	Unconjugated
Form / Buffer	Liquid in PBS, pH 7.4, containing 50% glycerol, 0.2% BSA and 0.01% sodium azide.	Storage	at-20°C

BACKGROUND

Dual-specificity protein phosphatase, dephosphorylating tyrosine-, serine- and threonine-phosphorylated proteins. Also functions as a lipid phosphatase, removing the phosphate in the D3 position of the inositol ring of PtdIns(3,4,5)P₃/phosphatidylinositol 3,4,5-trisphosphate, PtdIns(3,4)P₂/phosphatidylinositol 3,4-diphosphate and PtdIns3P/phosphatidylinositol 3-phosphate with a preference for PtdIns(3,4,5)P₃. Furthermore, this enzyme can also act as a cytosolic inositol 3-phosphatase acting on Ins(1,3,4,5,6)P₅/inositol 1,3,4,5,6 pentakisphosphate and possibly Ins(1,3,4,5)P₄/1D-myo-inositol 1,3,4,5-tetrakisphosphate. Antagonizes the PI3K-AKT/PKB signaling pathway by dephosphorylating phosphoinositides and thereby modulating cell cycle progression and cell survival.

APPLICATION

To ensure optimal assay performance, AREX recommends conducting reagent titration tailored to each testing system for optimal detection results.

WB	1:500 - 1:1000
----	----------------

*Results are sample-specific. Please refer to your local assay conditions and test parameters for reference.

PRODUCT OVERVIEW

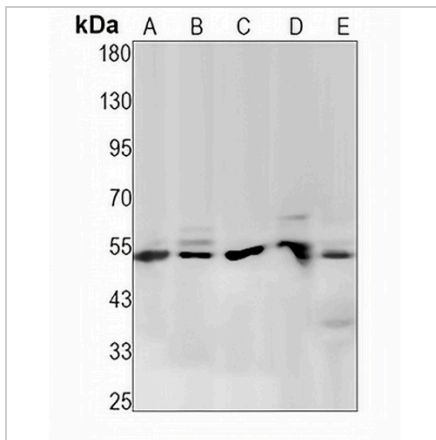
Description	Recombinant rabbit monoclonal antibody to PTEN (Phospho-S380)
Specificity	Recognizes endogenous levels of PTEN protein only when phosphorylated at S380
Antibody Type	Primary antibody, Recombinant
Immunogen	KLH-conjugated synthetic phosphopeptide corresponding to residues surrounding S380 of human PTEN protein. The exact sequence is proprietary.
Purification	The antibody was purified by immunogen affinity chromatography.
Molecular Weight	Predicted: 47 kD; Observed: 54 kD
Form/Buffer	Liquid in PBS, pH 7.4, containing 50% glycerol, 0.2% BSA and 0.01% sodium azide.
Alternative Names	MMAC1; TEP1; Phosphatidylinositol 3,4,5-trisphosphate 3-phosphatase and dual-specificity protein phosphatase PTEN; Mutated in multiple advanced cancers 1; Phosphatase and tensin homolog
Gene Symbol	PTEN
Entrez Gene	5728(Human); 19211(Mouse)
SwissProt	P60484(Human); O08586(Mouse)

*AREX continuously optimizes our products. Webpage content may not reflect the latest updates. For inquiries, please contact info@arexbio.com or your local distributor.

*Clone Number, Reactivity, Source/Host and Clonality can be found in the product name and Key Features section above.

DATASHEET**PTEN (Phospho-S380) Rabbit Monoclonal Antibody(C1508)**

CAT. NO. AMA01120

DATA

Western blot analysis of PTEN (Phospho-S380) expression in HEK293T (A), HeLa (B), THP1 (C), mouse kidney (D), mouse muscle (E) whole cell lysates. (Predicted band size: 47 kD; Observed band size: 54 kD)

STORAGE

Store at 4°C short term. For long term storage, store at -20°C, avoiding freeze/thaw cycles.

NOTE

For Research Use Only. Not for diagnostic, therapeutics, prophylactic or in vivo use.