

**DATASHEET**

**NRF2 (Phospho-S40) Rabbit Monoclonal Antibody(C1517)**

CAT. NO. AMA01129

**KEY FEATURES**

Target	NRF2 (Phospho-S40)	Source / Host	Rabbit
Reactivity	Human	Clonality	Monoclonal
Applications	WB	Conjugation	Unconjugated
Form / Buffer	Liquid in PBS, pH 7.4, containing 50% glycerol, 0.2% BSA and 0.01% sodium azide.	Storage	at-20°C

**BACKGROUND**

Transcription factor that plays a key role in the response to oxidative stress: binds to antioxidant response (ARE) elements present in the promoter region of many cytoprotective genes, such as phase 2 detoxifying enzymes, and promotes their expression, thereby neutralizing reactive electrophiles elements present in the promoter region of many cytoprotective genes, such as phase 2 detoxifying enzymes, and promotes their expression, thereby neutralizing reactive electrophiles . In normal conditions, ubiquitinated and degraded in the cytoplasm by the BCR(KEAP1) complex .

**APPLICATION**

To ensure optimal assay performance, AREX recommends conducting reagent titration tailored to each testing system for optimal detection results.

WB	1:500 - 1:1000
----	----------------

\*Results are sample-specific. Please refer to your local assay conditions and test parameters for reference.

**PRODUCT OVERVIEW**

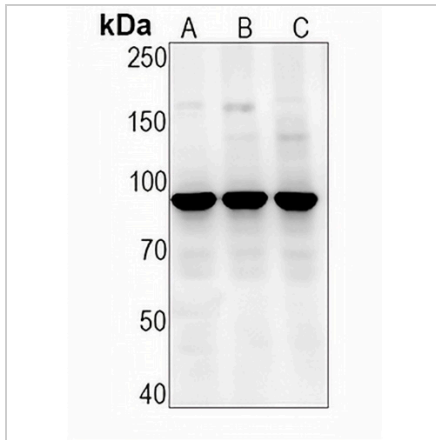
Description	Recombinant rabbit monoclonal antibody to NRF2 (Phospho-S40)
Specificity	Recognizes endogenous levels of NRF2 protein only when phosphorylated at S40
Antibody Type	Primary antibody, Recombinant
Immunogen	KLH-conjugated synthetic phosphopeptide corresponding to residues surrounding S40 of human NRF2 protein. The exact sequence is proprietary.
Purification	The antibody was purified by immunogen affinity chromatography.
Molecular Weight	Predicted: 67 kD; Observed: 90 kD
Form/Buffer	Liquid in PBS, pH 7.4, containing 50% glycerol, 0.2% BSA and 0.01% sodium azide.
Alternative Names	NRF2; Nuclear factor erythroid 2-related factor 2; NF-E2-related factor 2; NFE2-related factor 2; HEBP1; Nuclear factor, erythroid derived 2, like 2
Gene Symbol	NFE2L2
Entrez Gene	4780(Human)
SwissProt	Q16236(Human)

\*AREX continuously optimizes our products. Webpage content may not reflect the latest updates. For inquiries, please contact [info@arexbio.com](mailto:info@arexbio.com) or your local distributor.

\*Clone Number, Reactivity, Source/Host and Clonality can be found in the product name and Key Features section above.

**DATASHEET****NRF2 (Phospho-S40) Rabbit Monoclonal Antibody(C1517)**

CAT. NO. AMA01129

**DATA**

Western blot analysis of NRF2 (Phospho-S40) expression in HEK293T (A), HepG2 (B), A549 (C) whole cell lysates. (Predicted band size: 67 kD; Observed band size: 90 kD)

**STORAGE**

Store at 4°C short term. For long term storage, store at -20°C, avoiding freeze/thaw cycles.

**NOTE**

For Research Use Only. Not for diagnostic, therapeutics, prophylactic or in vivo use.