

DATASHEET
PKC alpha (Phospho-T638) Rabbit Monoclonal Antibody(C1518)
CAT. NO. AMA01130
KEY FEATURES

| | | | |
|---------------|--|---------------|--------------|
| Target | PKC alpha (Phospho-T638) | Source / Host | Rabbit |
| Reactivity | Human, Mouse | Clonality | Monoclonal |
| Applications | WB, IHC | Conjugation | Unconjugated |
| Form / Buffer | Liquid in PBS, pH 7.4, containing 50% glycerol, 0.2% BSA and 0.01% sodium azide. | Storage | at-20°C |

BACKGROUND

Calcium-activated, phospholipid- and diacylglycerol (DAG)-dependent serine/threonine-protein kinase that is involved in positive and negative regulation of cell proliferation, apoptosis, differentiation, migration and adhesion, tumorigenesis, cardiac hypertrophy, angiogenesis, platelet function and inflammation, by directly phosphorylating targets such as RAF1, BCL2, CSPG4, TNNT2/CTNT, or activating signaling cascade involving MAPK1/3 (ERK1/2) and RAP1GAP. Involved in cell proliferation and cell growth arrest by positive and negative regulation of the cell cycle.

APPLICATION

To ensure optimal assay performance, AREX recommends conducting reagent titration tailored to each testing system for optimal detection results.

| | |
|-----|----------------|
| WB | 1:500 - 1:1000 |
| IHC | 1:50 - 1:200 |

*Results are sample-specific. Please refer to your local assay conditions and test parameters for reference.

PRODUCT OVERVIEW

| | |
|-------------------|---|
| Description | Recombinant rabbit monoclonal antibody to PKC alpha (Phospho-T638) |
| Specificity | Recognizes endogenous levels of PKC alpha protein only when phosphorylated at T638 |
| Antibody Type | Primary antibody, Recombinant |
| Immunogen | KLH-conjugated synthetic phosphopeptide corresponding to residues surrounding T638 of human PKC alpha protein. The exact sequence is proprietary. |
| Purification | The antibody was purified by immunogen affinity chromatography. |
| Molecular Weight | Predicted: 76 kD; Observed: 80 kD |
| Form/Buffer | Liquid in PBS, pH 7.4, containing 50% glycerol, 0.2% BSA and 0.01% sodium azide. |
| Alternative Names | PKCA; PRKACA; Protein kinase C alpha type; PKC-A; PKC-alpha |
| Gene Symbol | PRKCA |
| Entrez Gene | 5578(Human); 18750(Mouse) |
| SwissProt | P17252(Human); P20444(Mouse) |

*AREX continuously optimizes our products. Webpage content may not reflect the latest updates. For inquiries, please contact info@arexbio.com or your local distributor.

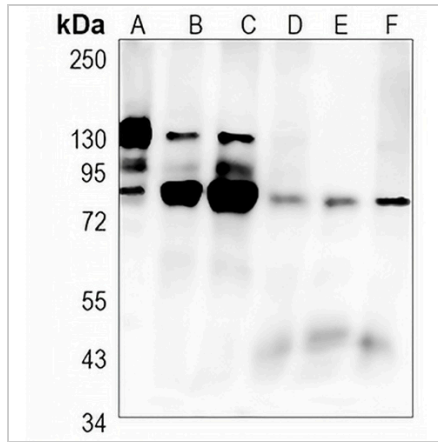
*Clone Number, Reactivity, Source/Host and Clonality can be found in the product name and Key Features section above.

DATASHEET

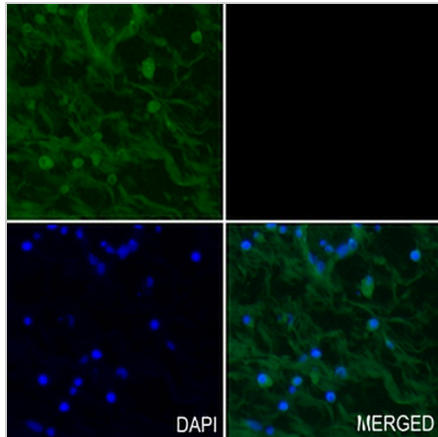
PKC alpha (Phospho-T638) Rabbit Monoclonal Antibody(C1518)

CAT. NO. AMA01130

DATA



Western blot analysis of PKC alpha (Phospho-T638) expression in K562 (A), HeLa (B), Jurkat (C), mouse kidney (D), mouse muscle (E) whole cell lysates. (Predicted band size: 76 kD; Observed band size: 80 kD)



Immunohistochemical analysis of PKC alpha (Phospho-T638) staining in human ovarian formalin fixed paraffin embedded tissue section. The section was pre-treated using heat mediated antigen retrieval with sodium citrate buffer (pH 6.0). The section was then incubated with the antibody at room temperature and detected using an HRP conjugated compact polymer system. Tyramide-AREX® Fluor 488 (green) was used as the chromogen. The section was then counterstained with DAPI (blue).

STORAGE

Store at 4°C short term. For long term storage, store at -20°C, avoiding freeze/thaw cycles.

NOTE

For Research Use Only. Not for diagnostic, therapeutics, prophylactic or in vivo use.