

DATASHEET

TAK1 (Phospho-S439) Rabbit Monoclonal Antibody(C1524)

CAT. NO. AMA01136

KEY FEATURES

Target	TAK1 (Phospho-S439)	Source / Host	Rabbit
Reactivity	Human	Clonality	Monoclonal
Applications	WB	Conjugation	Unconjugated
Form / Buffer	Liquid in PBS, pH 7.4, containing 50% glycerol, 0.2% BSA and 0.01% sodium azide.	Storage	at-20°C

BACKGROUND

Serine/threonine kinase which acts as an essential component of the MAP kinase signal transduction pathway . Plays an important role in the cascades of cellular responses evoked by changes in the environment . Mediates signal transduction of TRAF6, various cytokines including interleukin-1 (IL-1), transforming growth factor-beta (TGFB), TGFB-related factors like BMP2 and BMP4, toll-like receptors (TLR), tumor necrosis factor receptor CD40 and B-cell receptor (BCR) . Once activated, acts as an upstream activator of the MKK/JNK signal transduction cascade and the p38 MAPK signal transduction cascade through the phosphorylation and activation of several MAP kinase kinases like MAP2K1/MEK1, MAP2K3/MKK3, MAP2K6/MKK6 and MAP2K7/MKK7 .

APPLICATION

To ensure optimal assay performance, AREX recommends conducting reagent titration tailored to each testing system for optimal detection results.

WB	1:500 - 1:1000
----	----------------

*Results are sample-specific. Please refer to your local assay conditions and test parameters for reference.

PRODUCT OVERVIEW

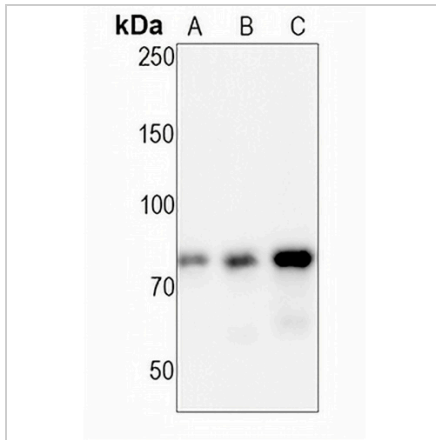
Description	Recombinant rabbit monoclonal antibody to TAK1 (Phospho-S439)
Specificity	Recognizes endogenous levels of TAK1 protein only when phosphorylated at S439
Antibody Type	Primary antibody, Recombinant
Immunogen	KLH-conjugated synthetic phosphopeptide corresponding to residues surrounding S439 of human TAK1 protein. The exact sequence is proprietary.
Purification	The antibody was purified by immunogen affinity chromatography.
Molecular Weight	Predicted: 67 kD; Observed: 72 kD
Form/Buffer	Liquid in PBS, pH 7.4, containing 50% glycerol, 0.2% BSA and 0.01% sodium azide.
Alternative Names	TAK1; Mitogen-activated protein kinase kinase kinase 7; Transforming growth factor-beta-activated kinase 1; TGF-beta-activated kinase 1
Gene Symbol	MAP3K7
Entrez Gene	6885(Human)
SwissProt	O43318(Human)

*AREX continuously optimizes our products. Webpage content may not reflect the latest updates. For inquiries, please contact info@arexbio.com or your local distributor.

*Clone Number, Reactivity, Source/Host and Clonality can be found in the product name and Key Features section above.

DATASHEET**TAK1 (Phospho-S439) Rabbit Monoclonal Antibody(C1524)**

CAT. NO. AMA01136

DATA

Western blot analysis of TAK1 (Phospho-S439) expression in PC3 (A), HeLa (B), K562 (C) whole cell lysates. (Predicted band size: 67 kD; Observed band size: 72 kD)

STORAGE

Store at 4°C short term. For long term storage, store at -20°C, avoiding freeze/thaw cycles.

NOTE

For Research Use Only. Not for diagnostic, therapeutics, prophylactic or in vivo use.