

DATASHEET

c-Met (Phospho-Y1349) Rabbit Monoclonal Antibody(C1525)

CAT. NO. AMA01137

KEY FEATURES

| | | | |
|---------------|--|---------------|--------------|
| Target | c-Met (Phospho-Y1349) | Source / Host | Rabbit |
| Reactivity | Human | Clonality | Monoclonal |
| Applications | WB | Conjugation | Unconjugated |
| Form / Buffer | Liquid in PBS, pH 7.4, containing 50% glycerol, 0.2% BSA and 0.01% sodium azide. | Storage | at-20°C |

BACKGROUND

Receptor tyrosine kinase that transduces signals from the extracellular matrix into the cytoplasm by binding to hepatocyte growth factor/HGF ligand. Regulates many physiological processes including proliferation, scattering, morphogenesis and survival. Ligand binding at the cell surface induces autophosphorylation of MET on its intracellular domain that provides docking sites for downstream signaling molecules. Following activation by ligand, interacts with the PI3-kinase subunit PIK3R1, PLCG1, SRC, GRB2, STAT3 or the adapter GAB1. Recruitment of these downstream effectors by MET leads to the activation of several signaling cascades including the RAS-ERK, PI3 kinase-AKT, or PLCgamma-PKC.

APPLICATION

To ensure optimal assay performance, AREX recommends conducting reagent titration tailored to each testing system for optimal detection results.

| | |
|----|----------------|
| WB | 1:500 - 1:1000 |
|----|----------------|

*Results are sample-specific. Please refer to your local assay conditions and test parameters for reference.

PRODUCT OVERVIEW

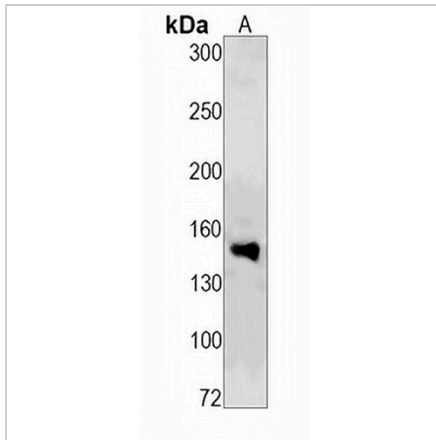
| | |
|-------------------|---|
| Description | Recombinant rabbit monoclonal antibody to c-Met (Phospho-Y1349) |
| Specificity | Recognizes endogenous levels of c-Met protein only when phosphorylated at Y1349 |
| Antibody Type | Primary antibody, Recombinant |
| Immunogen | KLH-conjugated synthetic phosphopeptide corresponding to residues surrounding Y1349 of human c-Met protein. The exact sequence is proprietary. |
| Purification | The antibody was purified by immunogen affinity chromatography. |
| Molecular Weight | Predicted: 155 kD; Observed: 155 kD |
| Form/Buffer | Liquid in PBS, pH 7.4, containing 50% glycerol, 0.2% BSA and 0.01% sodium azide. |
| Alternative Names | Hepatocyte growth factor receptor; HGF receptor; HGF/SF receptor; Proto-oncogene c-Met; Scatter factor receptor; SF receptor; Tyrosine-protein kinase Met |
| Gene Symbol | MET |
| Entrez Gene | 4233(Human) |
| SwissProt | P08581(Human) |

*AREX continuously optimizes our products. Webpage content may not reflect the latest updates. For inquiries, please contact info@arexbio.com or your local distributor.

*Clone Number, Reactivity, Source/Host and Clonality can be found in the product name and Key Features section above.

DATASHEET**c-Met (Phospho-Y1349) Rabbit Monoclonal Antibody(C1525)**

CAT. NO. AMA01137

DATA

Western blot analysis of c-Met (Phospho-Y1349) expression in A431 (A) whole cell lysates.
(Predicted band size: 155 kD; Observed band size: 155 kD)

STORAGE

Store at 4°C short term. For long term storage, store at -20°C, avoiding freeze/thaw cycles.

NOTE

For Research Use Only. Not for diagnostic, therapeutics, prophylactic or in vivo use.