

DATASHEET

Ubiquitin (Linkage specific-K63) Rabbit Monoclonal Antibody(C1529)

CAT. NO. AMA01141

KEY FEATURES

Target	Ubiquitin (Linkage specific-K63)	Source / Host	Rabbit
Reactivity	Human, Mouse, Rat	Clonality	Monoclonal
Applications	WB, IHC	Conjugation	Unconjugated
Form / Buffer	Liquid in PBS, pH 7.4, containing 50% glycerol, 0.2% BSA and 0.01% sodium azide.	Storage	at-20°C

BACKGROUND

Exists either covalently attached to another protein, or free (unanchored). When covalently bound, it is conjugated to target proteins via an isopeptide bond either as a monomer (monoubiquitin), a polymer linked via different Lys residues of the ubiquitin (polyubiquitin chains) or a linear polymer linked via the initiator Met of the ubiquitin (linear polyubiquitin chains).

APPLICATION

To ensure optimal assay performance, AREX recommends conducting reagent titration tailored to each testing system for optimal detection results.

WB	1:500 - 1:1000
IHC	1:50 - 1:200

*Results are sample-specific. Please refer to your local assay conditions and test parameters for reference.

PRODUCT OVERVIEW

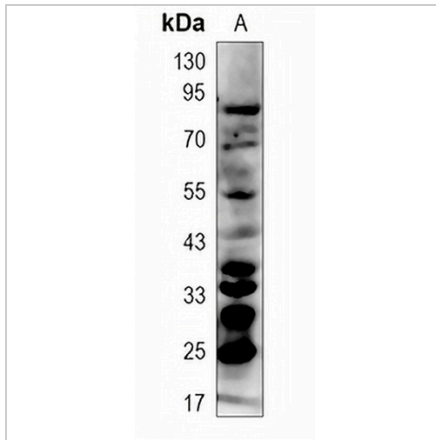
Description	Recombinant rabbit monoclonal antibody to Ubiquitin (Linkage specific-K63)
Specificity	Recognizes endogenous levels of Ubiquitin protein linkage specific-K63
Antibody Type	Primary antibody, Recombinant
Immunogen	KLH-conjugated synthetic peptide derived from human K63-linkage specific ubiquitin. The exact sequence is proprietary.
Purification	The antibody was purified by immunogen affinity chromatography.
Molecular Weight	Predicted: 25; Observed: 15-300 kD
Form/Buffer	Liquid in PBS, pH 7.4, containing 50% glycerol, 0.2% BSA and 0.01% sodium azide.
Alternative Names	UBB; Polyubiquitin-B; UBC; Polyubiquitin-C; RPS27A; UBA80; UBCEP1; Ubiquitin-40S ribosomal protein S27a; Ubiquitin carboxyl extension protein 80; UBA52; UBCEP2; Ubiquitin-60S ribosomal protein L40; CEP52; Ubiquitin A-52 residue ribosomal protein fusion product 1
Gene Symbol	UBA52; RPS27A; UBB; UBC
Entrez Gene	7314; 7316; 6233; 7311(Human); 22187; 22190; 78294; 22186(Mouse); 192255; 50522; 100912032; 64156(Rat)
SwissProt	P0CG47; P0CG48; P62979; P62987(Human); P0CG49; P0CG50; P62983; P62984(Mouse); P0CG51; Q63429; P62982; P62986(Rat)

*AREX continuously optimizes our products. Webpage content may not reflect the latest updates. For inquiries, please contact info@arex.bio or your local distributor.

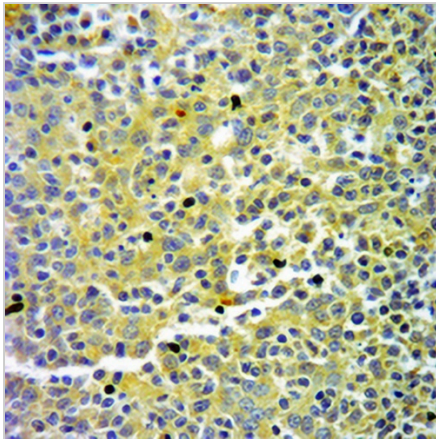
*Clone Number, Reactivity, Source/Host and Clonality can be found in the product name and Key Features section above.

DATASHEET**Ubiquitin (Linkage specific-K63) Rabbit Monoclonal Antibody(C1529)**

CAT. NO. AMA01141

DATA

Western blot analysis of Ubiquitin (Linkage specific-K63) expression in HeLa (A) whole cell lysates. (Predicted band size: 25; 77; 17; 14 kD; Observed band size: 15-300 kD)



Immunohistochemical analysis of Ubiquitin (Linkage specific-K63) staining in human tonsil formalin fixed paraffin embedded tissue section. The section was pre-treated using heat mediated antigen retrieval with sodium citrate buffer (pH 6.0). The section was then incubated with the antibody at room temperature and detected using an HRP conjugated compact polymer system. DAB was used as the chromogen. The section was then counterstained with haematoxylin and mounted with DPX.

STORAGE

Store at 4°C short term. For long term storage, store at -20°C, avoiding freeze/thaw cycles.

NOTE

For Research Use Only. Not for diagnostic, therapeutics, prophylactic or in vivo use.