

**DATASHEET**

**TAOK1/2/3 (Phospho-S181/S177) Rabbit Monoclonal Antibody(C1536)**

CAT. NO. AMA01148

**KEY FEATURES**

Target	TAOK1/2/3 (Phospho-S181/S177)	Source / Host	Rabbit
Reactivity	Human, Mouse	Clonality	Monoclonal
Applications	WB	Conjugation	Unconjugated
Form / Buffer	Liquid in PBS, pH 7.4, containing 50% glycerol, 0.2% BSA and 0.01% sodium azide.	Storage	at-20°C

**BACKGROUND**

Serine/threonine-protein kinase involved in various processes such as p38/MAPK14 stress-activated MAPK cascade, DNA damage response and regulation of cytoskeleton stability. Phosphorylates MAP2K3, MAP2K6 and MARK2. Acts as an activator of the p38/MAPK14 stress-activated MAPK cascade by mediating phosphorylation and subsequent activation of the upstream MAP2K3 and MAP2K6 kinases. Involved in G-protein coupled receptor signaling to p38/MAPK14. In response to DNA damage, involved in the G2/M transition DNA damage checkpoint by activating the p38/MAPK14 stress-activated MAPK cascade, probably by mediating phosphorylation of MAP2K3 and MAP2K6.

**APPLICATION**

To ensure optimal assay performance, AREX recommends conducting reagent titration tailored to each testing system for optimal detection results.

WB	1:500 - 1:1000
----	----------------

\*Results are sample-specific. Please refer to your local assay conditions and test parameters for reference.

**PRODUCT OVERVIEW**

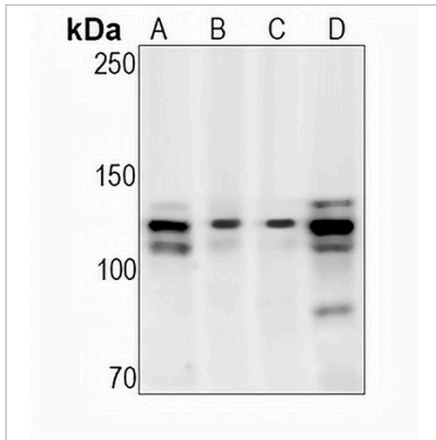
Description	Recombinant rabbit monoclonal antibody to TAOK1/2/3 (Phospho-S181/S177)
Specificity	Recognizes endogenous levels of TAOK1/2/3 protein only when phosphorylated at S181/S177
Antibody Type	Primary antibody, Recombinant
Immunogen	KLH-conjugated synthetic phosphopeptide corresponding to residues surrounding S181/S177 of human TAOK1/2/3. The exact sequence is proprietary.
Purification	The antibody was purified by immunogen affinity chromatography.
Molecular Weight	Predicted: 140, 130, 110 kD; Observed: 110-140 kD
Form/Buffer	Liquid in PBS, pH 7.4, containing 50% glycerol, 0.2% BSA and 0.01% sodium azide.
Alternative Names	KIAA1361; MAP3K16; MARKK; Serine/threonine-protein kinase TAO1; Kinase from chicken homolog B; hKFC-B; MARK Kinase; MARKK; Prostate-derived sterile 20-like kinase 2; PSK-2; PSK2; Prostate-derived STE20-like kinase 2; Thousand and one amino acid protein kinase 1; TAOK1; hTAOK1; KIAA0881; MAP3K17; PSK; PSK1; Serine/threonine-protein kinase TAO2; Kinase from chicken homolog C; hKFC-C; Prostate-derived sterile 20-like kinase 1; PSK-1; PSK1; Prostate-derived STE20-like kinase 1; Thousand and one amino acid protein kinase 2; DPK; JIK; KDS; MAP3K18; Serine/threonine-protein kinase TAO3; Cutaneous T-cell lymphoma-associated antigen HD-CL-09; CTCL-associated antigen HD-CL-09; Dendritic cell-derived protein kinase; JNK/SAPK-inhibitory kinase; Jun kinase-inhibitory kinase; Kinase from chicken homolog A; hKFC-A; Thousand and one amino acid protein 3
Gene Symbol	TAOK1; TAOK2; TAOK3
Entrez Gene	57551; 9344; 51347(Human); 216965; 381921; 330177(Mouse)
SwissProt	Q7L7X3; Q9UL54; Q9H2K8(Human); Q5F2E8; Q6ZQ29; Q8BYC6(Mouse)

\*AREX continuously optimizes our products. Webpage content may not reflect the latest updates. For inquiries, please contact [info@arexbio.com](mailto:info@arexbio.com) or your local distributor.

\*Clone Number, Reactivity, Source/Host and Clonality can be found in the product name and Key Features section above.

**DATASHEET****TAOK1/2/3 (Phospho-S181/S177) Rabbit Monoclonal Antibody(C1536)**

CAT. NO. AMA01148

**DATA**

Western blot analysis of TAOK1/2/3 (Phospho-S181/S177) expression in HeLa (A), Jurkat (B), mouse liver (C), mouse brain (D) whole cell lysates. (Predicted band size: 140, 130, 110 kD; Observed band size: 110-140 kD)

**STORAGE**

Store at 4°C short term. For long term storage, store at -20°C, avoiding freeze/thaw cycles.

**NOTE**

For Research Use Only. Not for diagnostic, therapeutics, prophylactic or in vivo use.