

**DATASHEET**

**H-Ras Rabbit Monoclonal Antibody(C1546)**

CAT. NO. AMA01158

**KEY FEATURES**

Target	H-Ras	Source / Host	Rabbit
Reactivity	Human, Mouse, Rat	Clonality	Monoclonal
Applications	WB	Conjugation	Unconjugated
Form / Buffer	Liquid in PBS, pH 7.4, containing 50% glycerol, 0.2% BSA and 0.01% sodium azide.	Storage	at-20°C

**BACKGROUND**

Involved in the activation of Ras protein signal transduction . Ras proteins bind GDP/GTP and possess intrinsic GTPase activity .

**APPLICATION**

To ensure optimal assay performance, AREX recommends conducting reagent titration tailored to each testing system for optimal detection results.

WB	1:500 - 1:1000
----	----------------

\*Results are sample-specific. Please refer to your local assay conditions and test parameters for reference.

**PRODUCT OVERVIEW**

Description	Recombinant rabbit monoclonal antibody to H-Ras
Specificity	Recognizes endogenous levels of H-Ras protein
Antibody Type	Primary antibody, Recombinant
Immunogen	KLH-conjugated synthetic peptide encompassing a sequence within human H-Ras. The exact sequence is proprietary.
Purification	The antibody was purified by immunogen affinity chromatography.
Molecular Weight	Predicted: 21 kD; Observed: 21 kD
Form/Buffer	Liquid in PBS, pH 7.4, containing 50% glycerol, 0.2% BSA and 0.01% sodium azide.
Alternative Names	HRAS1; GTPase HRas; H-Ras-1; Ha-Ras; Transforming protein p21; c-H-ras; p21ras
Gene Symbol	HRAS
Entrez Gene	3265(Human); 15461(Mouse); 293621(Rat)
SwissProt	P01112(Human); Q61411(Mouse); P20171(Rat)

\*AREX continuously optimizes our products. Webpage content may not reflect the latest updates. For inquiries, please contact [info@arexbio.com](mailto:info@arexbio.com) or your local distributor.

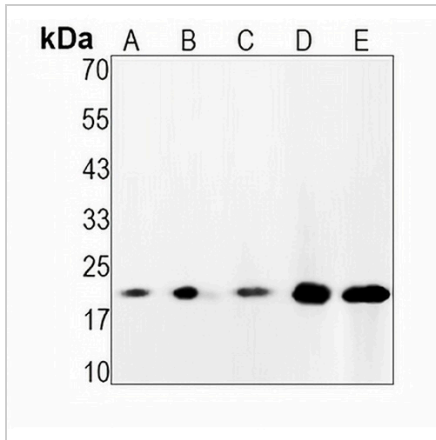
\*Clone Number, Reactivity, Source/Host and Clonality can be found in the product name and Key Features section above.

**DATASHEET**

**H-Ras Rabbit Monoclonal Antibody(C1546)**

CAT. NO. AMA01158

**DATA**



Western blot analysis of H-Ras expression in MCF7 (A), A549 (B), mouse muscle (C), mouse kidney (D), rat kidney (E) whole cell lysates. (Predicted band size: 21 kD; Observed band size: 21 kD)

**STORAGE**

Store at 4°C short term. For long term storage, store at -20°C, avoiding freeze/thaw cycles.

**NOTE**

For Research Use Only. Not for diagnostic, therapeutics, prophylactic or in vivo use.