

DATASHEET

CDK1/2/3 (Phospho-T14) Rabbit Monoclonal Antibody(C1550)

CAT. NO. AMA01162

KEY FEATURES

Target	CDK1/2/3 (Phospho-T14)	Source / Host	Rabbit
Reactivity	Human, Mouse	Clonality	Monoclonal
Applications	WB	Conjugation	Unconjugated
Form / Buffer	Liquid in PBS, pH 7.4, containing 50% glycerol, 0.2% BSA and 0.01% sodium azide.	Storage	at-20°C

BACKGROUND

Plays a key role in the control of the eukaryotic cell cycle by modulating the centrosome cycle as well as mitotic onset; promotes G2-M transition via association with multiple interphase cyclins .

APPLICATION

To ensure optimal assay performance, AREX recommends conducting reagent titration tailored to each testing system for optimal detection results.

WB	1:500 - 1:1000
----	----------------

*Results are sample-specific. Please refer to your local assay conditions and test parameters for reference.

PRODUCT OVERVIEW

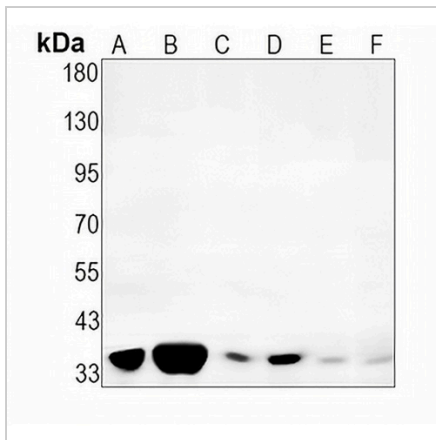
Description	Recombinant rabbit monoclonal antibody to CDK1/2/3 (Phospho-T14)
Specificity	Recognizes endogenous levels of CDK1/2/3 protein only when phosphorylated at T14
Antibody Type	Primary antibody, Recombinant
Immunogen	KLH-conjugated synthetic phosphopeptide corresponding to residues surrounding T14 of human CDK1/2/3. The exact sequence is proprietary.
Purification	The antibody was purified by immunogen affinity chromatography.
Molecular Weight	Predicted: 34, 33, 35 kD; Observed: 34 kD
Form/Buffer	Liquid in PBS, pH 7.4, containing 50% glycerol, 0.2% BSA and 0.01% sodium azide.
Alternative Names	CDK1; CDC2; CDC28A; CDKN1; P34CDC2; Cyclin-dependent kinase 1; CDK1; Cell division control protein 2 homolog; Cell division protein kinase 1; p34 protein kinase; CDK2; CDKN2; Cyclin-dependent kinase 2; Cell division protein kinase 2; p33 protein kinase; CDK3; CDKN3; Cyclin-dependent kinase 3; Cell division protein kinase 3
Gene Symbol	CDK1; CDK2; CDK3
Entrez Gene	1017(Human); 12534; 12566(Mouse)
SwissProt	P06493; P24941; Q00526(Human); P11440; P97377; Q80YP0(Mouse)

*AREX continuously optimizes our products. Webpage content may not reflect the latest updates. For inquiries, please contact info@arexbio.com or your local distributor.

*Clone Number, Reactivity, Source/Host and Clonality can be found in the product name and Key Features section above.

DATASHEET**CDK1/2/3 (Phospho-T14) Rabbit Monoclonal Antibody(C1550)**

CAT. NO. AMA01162

DATA

Western blot analysis of CDK1/2/3 (Phospho-T14) expression in PC3 (A), K562 (B), THP1 (C), mouse spleen (D), mouse kidney (E), rat kidney (F) whole cell lysates. (Predicted band size: 34, 33, 35 kD; Observed band size: 34 kD)

STORAGE

Store at 4°C short term. For long term storage, store at -20°C, avoiding freeze/thaw cycles.

NOTE

For Research Use Only. Not for diagnostic, therapeutics, prophylactic or in vivo use.