

DATASHEET

Caspase 3 Rabbit Monoclonal Antibody(C1553)

CAT. NO. AMA01165

KEY FEATURES

Target	Caspase 3	Source / Host	Rabbit
Reactivity	Human	Clonality	Monoclonal
Applications	WB	Conjugation	Unconjugated
Form / Buffer	Liquid in PBS, pH 7.4, containing 50% glycerol, 0.2% BSA and 0.01% sodium azide.	Storage	at-20°C

BACKGROUND

Thiol protease that acts as a major effector caspase involved in the execution phase of apoptosis . Following cleavage and activation by initiator caspases (CASP8, CASP9 and/or CASP10), mediates execution of apoptosis by catalyzing cleavage of many proteins . At the onset of apoptosis, it proteolytically cleaves poly(ADP-ribose) polymerase PARP1 at a '216-Asp-|-Gly-217' bond . Cleaves and activates sterol regulatory element binding proteins (SREBPs) between the basic helix-loop-helix leucine zipper domain and the membrane attachment domain . Cleaves and activates caspase-6, -7 and -9 (CASP6, CASP7 and CASP9, respectively) . Cleaves and inactivates interleukin-18 (IL18) . Involved in the cleavage of huntingtin . Triggers cell adhesion in sympathetic neurons through RET cleavage .

APPLICATION

To ensure optimal assay performance, AREX recommends conducting reagent titration tailored to each testing system for optimal detection results.

WB	1:500 - 1:1000
----	----------------

*Results are sample-specific. Please refer to your local assay conditions and test parameters for reference.

PRODUCT OVERVIEW

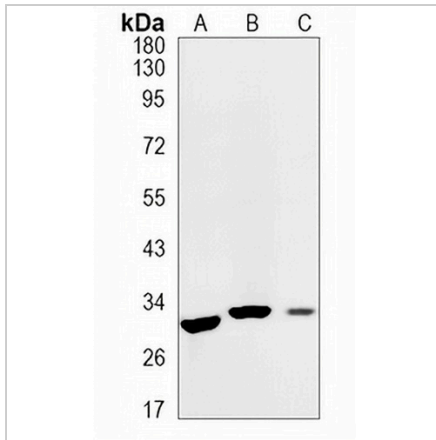
Description	Recombinant rabbit monoclonal antibody to Caspase 3
Specificity	Recognizes endogenous levels of Caspase 3 protein
Antibody Type	Primary antibody, Recombinant
Immunogen	Recombinant fusion protein of human Caspase 3. The exact sequence is proprietary.
Purification	The antibody was purified by immunogen affinity chromatography.
Molecular Weight	Predicted: 31 kD; Observed: 32 kD
Form/Buffer	Liquid in PBS, pH 7.4, containing 50% glycerol, 0.2% BSA and 0.01% sodium azide.
Alternative Names	CPP32; Caspase-3; CASP-3; Apopain; Cysteine protease CPP32; CPP-32; Protein Yama; SREBP cleavage activity 1; SCA-1
Gene Symbol	CASP3
Entrez Gene	836(Human)
SwissProt	P42574(Human)

*AREX continuously optimizes our products. Webpage content may not reflect the latest updates. For inquiries, please contact info@arexbio.com or your local distributor.

*Clone Number, Reactivity, Source/Host and Clonality can be found in the product name and Key Features section above.

DATASHEET**Caspase 3 Rabbit Monoclonal Antibody(C1553)**

CAT. NO. AMA01165

DATA

Western blot analysis of Caspase 3 expression in SHSY5Y (A), K562 (B), THP1 (C) whole cell lysates. (Predicted band size: 31 kD; Observed band size: 32 kD)

STORAGE

Store at 4°C short term. For long term storage, store at -20°C, avoiding freeze/thaw cycles.

NOTE

For Research Use Only. Not for diagnostic, therapeutics, prophylactic or in vivo use.