

## DATASHEET

# Histone H1 (Phospho-T17) Rabbit Monoclonal Antibody(C1556)

CAT. NO. AMA01168

### KEY FEATURES

Target	Histone H1 (Phospho-T17)	Source / Host	Rabbit
Reactivity	Human	Clonality	Monoclonal
Applications	WB	Conjugation	Unconjugated
Form / Buffer	Liquid in PBS, pH 7.4, containing 50% glycerol, 0.2% BSA and 0.01% sodium azide.	Storage	at-20°C

### BACKGROUND

Histone H1 protein binds to linker DNA between nucleosomes forming the macromolecular structure known as the chromatin fiber. Histones H1 are necessary for the condensation of nucleosome chains into higher-order structured fibers and promote formation of the H3K27me3 mark by the PRC2/EED-EZH2 complex. Ability to associate with nucleosomes and compact chromatin depends on linker DNA length and trajectory. Also acts as a regulator of individual gene transcription through chromatin remodeling, nucleosome spacing and DNA methylation.

### APPLICATION

To ensure optimal assay performance, AREX recommends conducting reagent titration tailored to each testing system for optimal detection results.

WB	1:500 - 1:1000
----	----------------

\*Results are sample-specific. Please refer to your local assay conditions and test parameters for reference.

### PRODUCT OVERVIEW

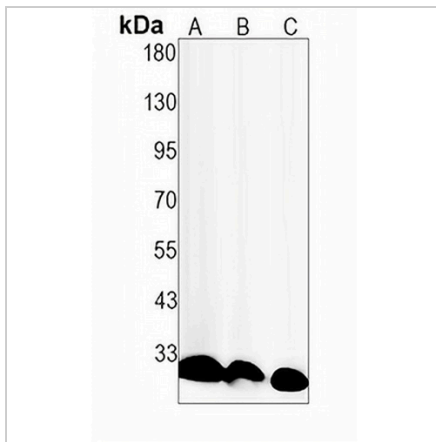
Description	Recombinant rabbit monoclonal antibody to Histone H1 (Phospho-T17)
Specificity	Recognizes endogenous levels of Histone H1 protein only when phosphorylated at T17
Antibody Type	Primary antibody, Recombinant
Immunogen	KLH-conjugated synthetic phosphopeptide corresponding to residues surrounding T17 of human Histone H1. The exact sequence is proprietary.
Purification	The antibody was purified by immunogen affinity chromatography.
Molecular Weight	Predicted: 21 kD; Observed: 30 kD
Form/Buffer	Liquid in PBS, pH 7.4, containing 50% glycerol, 0.2% BSA and 0.01% sodium azide.
Alternative Names	H1F4; Histone H1.4; Histone H1b; Histone H1s-4
Gene Symbol	HIST1H1E
Entrez Gene	3008(Human)
SwissProt	P10412(Human)

\*AREX continuously optimizes our products. Webpage content may not reflect the latest updates. For inquiries, please contact [info@arexbio.com](mailto:info@arexbio.com) or your local distributor.

\*Clone Number, Reactivity, Source/Host and Clonality can be found in the product name and Key Features section above.

**DATASHEET****Histone H1 (Phospho-T17) Rabbit Monoclonal Antibody(C1556)**

CAT. NO. AMA01168

**DATA**

Western blot analysis of Histone H1 (Phospho-T17) expression in K562 (A), THP1 (B), MCF7 (C) whole cell lysates. (Predicted band size: 21 kD; Observed band size: 30 kD)

**STORAGE**

Store at 4°C short term. For long term storage, store at -20°C, avoiding freeze/thaw cycles.

**NOTE**

For Research Use Only. Not for diagnostic, therapeutics, prophylactic or in vivo use.