

DATASHEET

CD38 Rabbit Monoclonal Antibody(C1564)

CAT. NO. AMA01176

KEY FEATURES

| | | | |
|---------------|--|---------------|--------------|
| Target | CD38 | Source / Host | Rabbit |
| Reactivity | Human, Rat | Clonality | Monoclonal |
| Applications | WB | Conjugation | Unconjugated |
| Form / Buffer | Liquid in PBS, pH 7.4, containing 50% glycerol, 0.2% BSA and 0.01% sodium azide. | Storage | at-20°C |

BACKGROUND

Multifunctional transmembrane glycoprotein able to exert enzymatic activities and also to mobilize calcium, to transduce signals, to adhere to hyaluronan and to other ligands. Synthesizes cyclic ADP-ribose (cADPR), a second messenger for glucose-induced insulin secretion , a second messenger for glucose-induced insulin secretion . Synthesizes the Ca(2+) mobilizer nicotinate-adenine dinucleotide phosphate, NAADP(+), from 2'-phospho-cADPR and nicotinic acid, as well as from NADP(+) and nicotinic acid. At both pH 5.0 and pH 7.4 preferentially transforms 2'-phospho-cADPR into NAADP(+), while preferentially cleaving NADP(+) to cADPR and ADPRP rather than into NADDP(+). Has cADPR hydrolase activity .

APPLICATION

To ensure optimal assay performance, AREX recommends conducting reagent titration tailored to each testing system for optimal detection results.

| | |
|----|----------------|
| WB | 1:500 - 1:1000 |
|----|----------------|

*Results are sample-specific. Please refer to your local assay conditions and test parameters for reference.

PRODUCT OVERVIEW

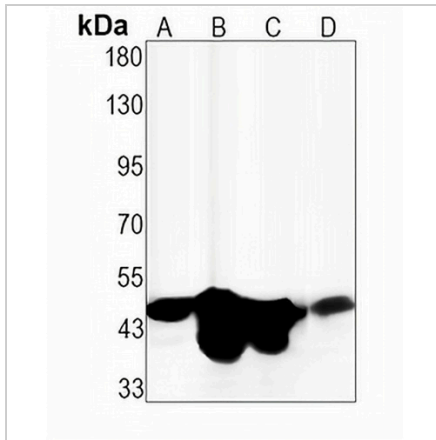
| | |
|-------------------|---|
| Description | Recombinant rabbit monoclonal antibody to CD38 |
| Specificity | Recognizes endogenous levels of CD38 protein |
| Antibody Type | Primary antibody, Recombinant |
| Immunogen | KLH-conjugated synthetic peptide encompassing a sequence within human CD38. The exact sequence is proprietary. |
| Purification | The antibody was purified by immunogen affinity chromatography. |
| Molecular Weight | Predicted: 34 kD; Observed: 45 kD |
| Form/Buffer | Liquid in PBS, pH 7.4, containing 50% glycerol, 0.2% BSA and 0.01% sodium azide. |
| Alternative Names | ADP-ribosyl cyclase/cyclic ADP-ribose hydrolase 1; 2'-phospho-ADP-ribosyl cyclase; 2'-phospho-ADP-ribosyl cyclase/2'-phospho-cyclic-ADP-ribose transferase; 2'-phospho-cyclic-ADP-ribose transferase; ADP-ribosyl cyclase 1; ADPRC 1; Cyclic ADP-ribose hydrolase 1; cADPr hydrolase 1; T10; CD38 |
| Gene Symbol | CD38 |
| Entrez Gene | 952(Human) |
| SwissProt | P28907(Human) |

*AREX continuously optimizes our products. Webpage content may not reflect the latest updates. For inquiries, please contact info@arexbio.com or your local distributor.

*Clone Number, Reactivity, Source/Host and Clonality can be found in the product name and Key Features section above.

DATASHEET**CD38 Rabbit Monoclonal Antibody(C1564)**

CAT. NO. AMA01176

DATA

Western blot analysis of CD38 expression in A549 (A), THP1 (B), K562 (C), C6 (D) whole cell lysates. (Predicted band size: 34 kD; Observed band size: 45 kD)

STORAGE

Store at 4°C short term. For long term storage, store at -20°C, avoiding freeze/thaw cycles.

NOTE

For Research Use Only. Not for diagnostic, therapeutics, prophylactic or in vivo use.