

DATASHEET

Caspase 6 Rabbit Monoclonal Antibody(C1570)

CAT. NO. AMA01182

KEY FEATURES

Target	Caspase 6	Source / Host	Rabbit
Reactivity	Human	Clonality	Monoclonal
Applications	WB	Conjugation	Unconjugated
Form / Buffer	Liquid in PBS, pH 7.4, containing 50% glycerol, 0.2% BSA and 0.01% sodium azide.	Storage	at-20°C

BACKGROUND

Cysteine protease that plays essential roles in programmed cell death, axonal degeneration, development and innate immunity . Acts as a non-canonical executioner caspase during apoptosis: localizes in the nucleus and cleaves the nuclear structural protein NUMA1 and lamin A/LMNA thereby inducing nuclear shrinkage and fragmentation . Lamin-A/LMNA cleavage is required for chromatin condensation and nuclear disassembly during apoptotic execution . Acts as a regulator of liver damage by promoting hepatocyte apoptosis: in absence of phosphorylation by AMP-activated protein kinase (AMPK), catalyzes cleavage of BID, leading to cytochrome c release, thereby participating in nonalcoholic steatohepatitis . Cleaves PARK7/DJ-1 in cells undergoing apoptosis .

APPLICATION

To ensure optimal assay performance, AREX recommends conducting reagent titration tailored to each testing system for optimal detection results.

WB	1:500 - 1:1000
----	----------------

*Results are sample-specific. Please refer to your local assay conditions and test parameters for reference.

PRODUCT OVERVIEW

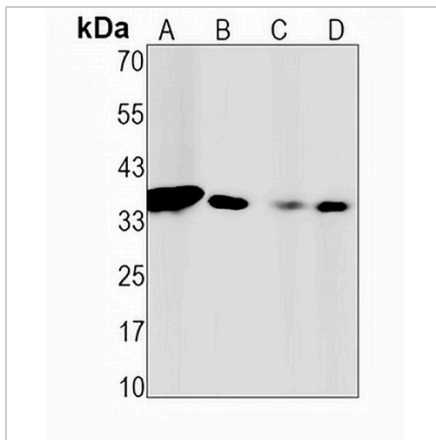
Description	Recombinant rabbit monoclonal antibody to Caspase 6
Specificity	Recognizes endogenous levels of Caspase 6 protein
Antibody Type	Primary antibody, Recombinant
Immunogen	KLH-conjugated synthetic peptide encompassing a sequence within human Caspase 6. The exact sequence is proprietary.
Purification	The antibody was purified by immunogen affinity chromatography.
Molecular Weight	Predicted: 33 kD; Observed: 35, 18, 11 kD
Form/Buffer	Liquid in PBS, pH 7.4, containing 50% glycerol, 0.2% BSA and 0.01% sodium azide.
Alternative Names	MCH2; Caspase-6; CASP-6; Apoptotic protease Mch-2
Gene Symbol	CASP6
Entrez Gene	839(Human)
SwissProt	P55212(Human)

*AREX continuously optimizes our products. Webpage content may not reflect the latest updates. For inquiries, please contact info@arexbio.com or your local distributor.

*Clone Number, Reactivity, Source/Host and Clonality can be found in the product name and Key Features section above.

DATASHEET**Caspase 6 Rabbit Monoclonal Antibody(C1570)**

CAT. NO. AMA01182

DATA

Western blot analysis of Caspase 6 expression in PC3 (A), THP1 (B), A549 (C), mouse kidney (D) whole cell lysates. (Predicted band size: 33 kD; Observed band size: 35, 18, 11 kD)

STORAGE

Store at 4°C short term. For long term storage, store at -20°C, avoiding freeze/thaw cycles.

NOTE

For Research Use Only. Not for diagnostic, therapeutics, prophylactic or in vivo use.