

**DATASHEET**

**Caspase 14 Rabbit Monoclonal Antibody(C1575)**

CAT. NO. AMA01187

**KEY FEATURES**

Target	Caspase 14	Source / Host	Rabbit
Reactivity	Human, Mouse, Rat	Clonality	Monoclonal
Applications	WB	Conjugation	Unconjugated
Form / Buffer	Liquid in PBS, pH 7.4, containing 50% glycerol, 0.2% BSA and 0.01% sodium azide.	Storage	at-20°C

**BACKGROUND**

Non-apoptotic caspase involved in epidermal differentiation. Is the predominant caspase in epidermal stratum corneum . Seems to play a role in keratinocyte differentiation and is required for cornification. Regulates maturation of the epidermis by proteolytically processing filaggrin . In vitro has a preference for the substrate [WY]-X-X-D motif and is active on the synthetic caspase substrate WEHD-ACF . Involved in processing of prosaposin in the epidermis . May be involved in retinal pigment epithelium cell barrier function . Involved in DNA degradation in differentiated keratinocytes probably by cleaving DFFA/ICAD leading to liberation of DFFB/CAD .

**APPLICATION**

To ensure optimal assay performance, AREX recommends conducting reagent titration tailored to each testing system for optimal detection results.

WB	1:500 - 1:1000
----	----------------

\*Results are sample-specific. Please refer to your local assay conditions and test parameters for reference.

**PRODUCT OVERVIEW**

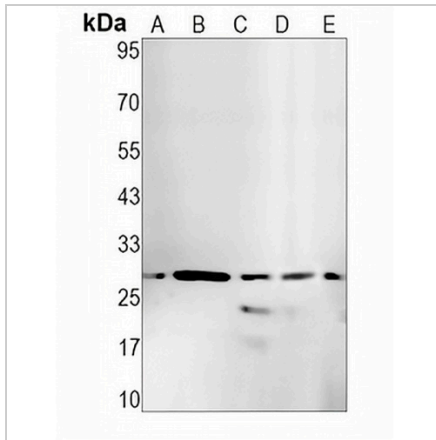
Description	Recombinant rabbit monoclonal antibody to Caspase 14
Specificity	Recognizes endogenous levels of Caspase 14 protein
Antibody Type	Primary antibody, Recombinant
Immunogen	KLH-conjugated synthetic peptide encompassing a sequence within human Caspase 14. The exact sequence is proprietary.
Purification	The antibody was purified by immunogen affinity chromatography.
Molecular Weight	Predicted: 27 kD; Observed: 28 kD
Form/Buffer	Liquid in PBS, pH 7.4, containing 50% glycerol, 0.2% BSA and 0.01% sodium azide.
Alternative Names	Caspase-14; CASP-14
Gene Symbol	CASP14
Entrez Gene	23581(Human); 12365(Mouse)
SwissProt	P31944(Human); O89094(Mouse)

\*AREX continuously optimizes our products. Webpage content may not reflect the latest updates. For inquiries, please contact [info@arexbio.com](mailto:info@arexbio.com) or your local distributor.

\*Clone Number, Reactivity, Source/Host and Clonality can be found in the product name and Key Features section above.

**DATASHEET****Caspase 14 Rabbit Monoclonal Antibody(C1575)**

CAT. NO. AMA01187

**DATA**

Western blot analysis of Caspase 14 expression in A431 (A), K562 (B), MCF7 (C), mouse muscle (D), rat muscle (E) whole cell lysates. (Predicted band size: 27 kD; Observed band size: 28 kD)

**STORAGE**

Store at 4°C short term. For long term storage, store at -20°C, avoiding freeze/thaw cycles.

**NOTE**

For Research Use Only. Not for diagnostic, therapeutics, prophylactic or in vivo use.