

**DATASHEET**

**IKB alpha (Phospho-S36) Rabbit Monoclonal Antibody(C1580)**

CAT. NO. AMA01192

**KEY FEATURES**

|               |  |               |              |
|---------------|--|---------------|--------------|
| Target        | IKB alpha (Phospho-S36)  | Source / Host | Rabbit       |
| Reactivity    | Human  | Clonality     | Monoclonal   |
| Applications  | WB   | Conjugation   | Unconjugated |
| Form / Buffer | Liquid in PBS, pH 7.4, containing 50% glycerol, 0.2% BSA and 0.01% sodium azide. | Storage       | at-20°C      |

**BACKGROUND**

Inhibits the activity of dimeric NF-kappa-B/REL complexes by trapping REL (RELA/p65 and NFKB1/p50) dimers in the cytoplasm by masking their nuclear localization signals dimers in the cytoplasm by masking their nuclear localization signals . On cellular stimulation by immune and pro-inflammatory responses, becomes phosphorylated promoting ubiquitination and degradation, enabling the dimeric RELA to translocate to the nucleus and activate transcription .

**APPLICATION**

To ensure optimal assay performance, AREX recommends conducting reagent titration tailored to each testing system for optimal detection results.

|    |                |
|----|----------------|
| WB | 1:500 - 1:1000 |
|----|----------------|

\*Results are sample-specific. Please refer to your local assay conditions and test parameters for reference.

**PRODUCT OVERVIEW**

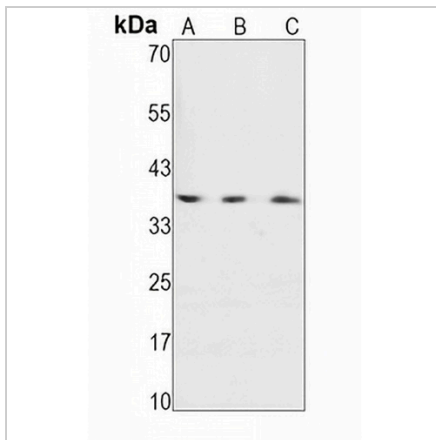
|                   |  |
|-------------------|--|
| Description       | Recombinant rabbit monoclonal antibody to IKB alpha (Phospho-S36)  |
| Specificity       | Recognizes endogenous levels of IKB alpha protein only when phosphorylated at S36  |
| Antibody Type     | Primary antibody, Recombinant  |
| Immunogen         | KLH-conjugated synthetic phosphopeptide corresponding to residues surrounding S36 of human IKB alpha. The exact sequence is proprietary.                 |
| Purification      | The antibody was purified by immunogen affinity chromatography.  |
| Molecular Weight  | Predicted: 35 kD; Observed: 39 kD  |
| Form/Buffer       | Liquid in PBS, pH 7.4, containing 50% glycerol, 0.2% BSA and 0.01% sodium azide.   |
| Alternative Names | IKBA; MAD3; NFKBI; NF-kappa-B inhibitor alpha; I-kappa-B-alpha; Ikb-alpha; IkappaBalpaha; Major histocompatibility complex enhancer-binding protein MAD3 |
| Gene Symbol       | NFKBIA   |
| Entrez Gene       | 4792(Human)  |
| SwissProt         | P25963(Human)  |

\*AREX continuously optimizes our products. Webpage content may not reflect the latest updates. For inquiries, please contact [info@arexbio.com](mailto:info@arexbio.com) or your local distributor.

\*Clone Number, Reactivity, Source/Host and Clonality can be found in the product name and Key Features section above.

**DATASHEET****IKB alpha (Phospho-S36) Rabbit Monoclonal Antibody(C1580)**

CAT. NO. AMA01192

**DATA**

Western blot analysis of IKB alpha (Phospho-S36) expression in PC3 (A), THP1 (B), A549 (C) whole cell lysates. (Predicted band size: 35 kD; Observed band size: 39 kD)

**STORAGE**

Store at 4°C short term. For long term storage, store at -20°C, avoiding freeze/thaw cycles.

**NOTE**

For Research Use Only. Not for diagnostic, therapeutics, prophylactic or in vivo use.