

DATASHEET

LRP6 (Phospho-S1490) Rabbit Monoclonal Antibody(C1585)

CAT. NO. AMA01197

KEY FEATURES

Target	LRP6 (Phospho-S1490)	Source / Host	Rabbit
Reactivity	Human	Clonality	Monoclonal
Applications	WB	Conjugation	Unconjugated
Form / Buffer	Liquid in PBS, pH 7.4, containing 50% glycerol, 0.2% BSA and 0.01% sodium azide.	Storage	at-20°C

BACKGROUND

Component of the Wnt-Fzd-LRP5-LRP6 complex that triggers beta-catenin signaling through inducing aggregation of receptor-ligand complexes into ribosome-sized signalosomes . Cell-surface coreceptor of Wnt/beta-catenin signaling, which plays a pivotal role in various processes including retinal angiogenesis and bone formation . The Wnt-induced Fzd/LRP6 coreceptor complex recruits DVL1 polymers to the plasma membrane which, in turn, recruits the AXIN1/GSK3B-complex to the cell surface promoting the formation of signalosomes and inhibiting AXIN1/GSK3-mediated phosphorylation and destruction of beta-catenin . Required for posterior patterning of the epiblast during gastrulation .

APPLICATION

To ensure optimal assay performance, AREX recommends conducting reagent titration tailored to each testing system for optimal detection results.

WB	1:500 - 1:1000
----	----------------

*Results are sample-specific. Please refer to your local assay conditions and test parameters for reference.

PRODUCT OVERVIEW

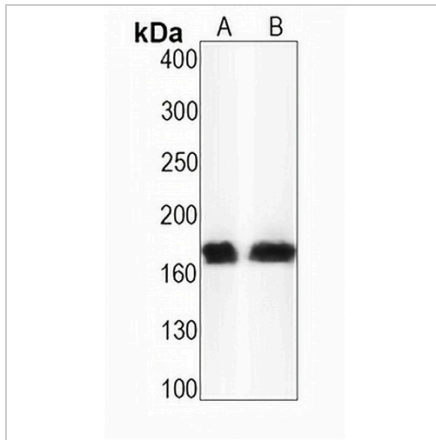
Description	Recombinant rabbit monoclonal antibody to LRP6 (Phospho-S1490)
Specificity	Recognizes endogenous levels of LRP6 protein only when phosphorylated at S1490
Antibody Type	Primary antibody, Recombinant
Immunogen	KLH-conjugated synthetic phosphopeptide corresponding to residues surrounding S1490 of human LRP6. The exact sequence is proprietary.
Purification	The antibody was purified by immunogen affinity chromatography.
Molecular Weight	Predicted: 180 kD; Observed: 180 kD
Form/Buffer	Liquid in PBS, pH 7.4, containing 50% glycerol, 0.2% BSA and 0.01% sodium azide.
Alternative Names	Low-density lipoprotein receptor-related protein 6; LRP-6
Gene Symbol	LRP6
Entrez Gene	4040(Human)
SwissProt	O75581(Human)

*AREX continuously optimizes our products. Webpage content may not reflect the latest updates. For inquiries, please contact info@arexbio.com or your local distributor.

*Clone Number, Reactivity, Source/Host and Clonality can be found in the product name and Key Features section above.

DATASHEET**LRP6 (Phospho-S1490) Rabbit Monoclonal Antibody(C1585)**

CAT. NO. AMA01197

DATA

Western blot analysis of LRP6 (Phospho-S1490) expression in HeLa (A), A431 (B) whole cell lysates. (Predicted band size: 180 kD; Observed band size: 180 kD)

STORAGE

Store at 4°C short term. For long term storage, store at -20°C, avoiding freeze/thaw cycles.

NOTE

For Research Use Only. Not for diagnostic, therapeutics, prophylactic or in vivo use.