

DATASHEET

CD32 Rabbit Monoclonal Antibody(C1587)

CAT. NO. AMA01199

KEY FEATURES

| | | | |
|---------------|--|---------------|--------------|
| Target | CD32 | Source / Host | Rabbit |
| Reactivity | Human, Rat | Clonality | Monoclonal |
| Applications | WB | Conjugation | Unconjugated |
| Form / Buffer | Liquid in PBS, pH 7.4, containing 50% glycerol, 0.2% BSA and 0.01% sodium azide. | Storage | at-20°C |

BACKGROUND

Binds to the Fc region of immunoglobulins gamma. Low affinity receptor. By binding to IgG it initiates cellular responses against pathogens and soluble antigens. Promotes phagocytosis of opsonized antigens.

APPLICATION

To ensure optimal assay performance, AREX recommends conducting reagent titration tailored to each testing system for optimal detection results.

| | |
|----|----------------|
| WB | 1:500 - 1:1000 |
|----|----------------|

*Results are sample-specific. Please refer to your local assay conditions and test parameters for reference.

PRODUCT OVERVIEW

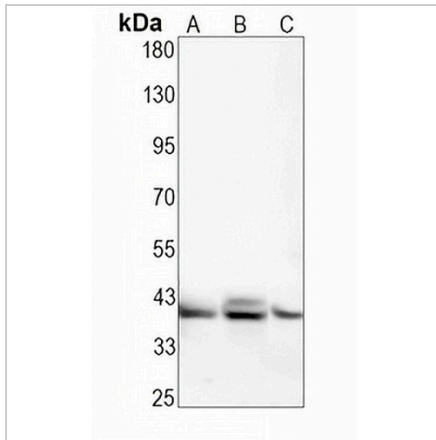
| | |
|-------------------|--|
| Description | Recombinant rabbit monoclonal antibody to CD32 |
| Specificity | Recognizes endogenous levels of CD32 protein |
| Antibody Type | Primary antibody, Recombinant |
| Immunogen | KLH-conjugated synthetic peptide encompassing a sequence within human CD32. The exact sequence is proprietary. |
| Purification | The antibody was purified by immunogen affinity chromatography. |
| Molecular Weight | Predicted: 35, 34 kD; Observed: 37-43 kD |
| Form/Buffer | Liquid in PBS, pH 7.4, containing 50% glycerol, 0.2% BSA and 0.01% sodium azide. |
| Alternative Names | CD32; FCG2; FCGR2A1; IGFR2; Low affinity immunoglobulin gamma Fc region receptor II-a; IgG Fc receptor II-a; CDw32; Fc-gamma RII-a; Fc-gamma-RIIa; FcRII-a; CD32 |
| Gene Symbol | FCGR2A; FCGR2B; FCGR2C |
| Entrez Gene | 2212; 2213; 9103(Human) |
| SwissProt | P12318; P31994; P31995(Human) |

*AREX continuously optimizes our products. Webpage content may not reflect the latest updates. For inquiries, please contact info@arexbio.com or your local distributor.

*Clone Number, Reactivity, Source/Host and Clonality can be found in the product name and Key Features section above.

DATASHEET**CD32 Rabbit Monoclonal Antibody(C1587)**

CAT. NO. AMA01199

DATA

Western blot analysis of CD32 expression in K562 (A), THP1 (B), rat muscle (C) whole cell lysates. (Predicted band size: 35, 34 kD; Observed band size: 37-43 kD)

STORAGE

Store at 4°C short term. For long term storage, store at -20°C, avoiding freeze/thaw cycles.

NOTE

For Research Use Only. Not for diagnostic, therapeutics, prophylactic or in vivo use.