

DATASHEET

CDK16 Rabbit Monoclonal Antibody(C1588)

CAT. NO. AMA01200

KEY FEATURES

Target	CDK16	Source / Host	Rabbit
Reactivity	Human	Clonality	Monoclonal
Applications	WB	Conjugation	Unconjugated
Form / Buffer	Liquid in PBS, pH 7.4, containing 50% glycerol, 0.2% BSA and 0.01% sodium azide.	Storage	at-20°C

BACKGROUND

Protein kinase that plays a role in vesicle-mediated transport processes and exocytosis. Regulates GH1 release by brain neurons. Phosphorylates NSF, and thereby regulates NSF oligomerization. Required for normal spermatogenesis. Regulates neuron differentiation and dendrite development . Plays a role in the regulation of insulin secretion in response to changes in blood glucose levels. Can phosphorylate CCNY at 'Ser-336' (in vitro).

APPLICATION

To ensure optimal assay performance, AREX recommends conducting reagent titration tailored to each testing system for optimal detection results.

WB	1:500 - 1:1000
----	----------------

*Results are sample-specific. Please refer to your local assay conditions and test parameters for reference.

PRODUCT OVERVIEW

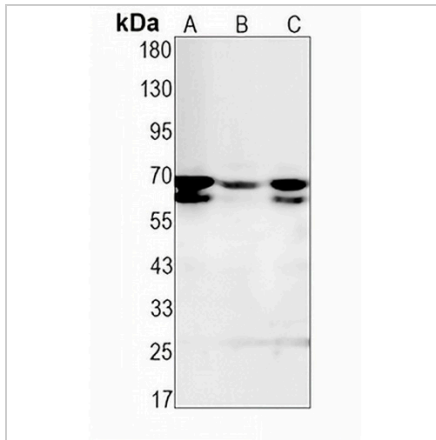
Description	Recombinant rabbit monoclonal antibody to CDK16
Specificity	Recognizes endogenous levels of CDK16 protein
Antibody Type	Primary antibody, Recombinant
Immunogen	Recombinant fusion protein of human CDK16. The exact sequence is proprietary.
Purification	The antibody was purified by immunogen affinity chromatography.
Molecular Weight	Predicted: 55 kD; Observed: 62-70 kD
Form/Buffer	Liquid in PBS, pH 7.4, containing 50% glycerol, 0.2% BSA and 0.01% sodium azide.
Alternative Names	PCTAIRE1; PCK1; Cyclin-dependent kinase 16; Cell division protein kinase 16; PCTAIRE-motif protein kinase 1; Serine/threonine-protein kinase PCTAIRE-1
Gene Symbol	CDK16
Entrez Gene	5127(Human)
SwissProt	Q00536(Human)

*AREX continuously optimizes our products. Webpage content may not reflect the latest updates. For inquiries, please contact info@arexbio.com or your local distributor.

*Clone Number, Reactivity, Source/Host and Clonality can be found in the product name and Key Features section above.

DATASHEET**CDK16 Rabbit Monoclonal Antibody(C1588)**

CAT. NO. AMA01200

DATA

Western blot analysis of CDK16 expression in A431 (A), THP1 (B), MCF7 (C) whole cell lysates. (Predicted band size: 55 kD; Observed band size: 62-70 kD)

STORAGE

Store at 4°C short term. For long term storage, store at -20°C, avoiding freeze/thaw cycles.

NOTE

For Research Use Only. Not for diagnostic, therapeutics, prophylactic or in vivo use.