

## DATASHEET

# IL-1 beta Rabbit Monoclonal Antibody(C1592)

CAT. NO. AMA01204

### KEY FEATURES

Target	IL-1 beta	Source / Host	Rabbit
Reactivity	Human, Mouse, Rat	Clonality	Monoclonal
Applications	WB	Conjugation	Unconjugated
Form / Buffer	Liquid in PBS, pH 7.4, containing 50% glycerol, 0.2% BSA and 0.01% sodium azide.	Storage	at-20°C

### BACKGROUND

Potent pro-inflammatory cytokine . Initially discovered as the major endogenous pyrogen, induces prostaglandin synthesis, neutrophil influx and activation, T-cell activation and cytokine production, B-cell activation and antibody production, and fibroblast proliferation and collagen production . Promotes Th17 differentiation of T-cells. Synergizes with IL12/interleukin-12 to induce IFNG synthesis from T-helper 1 (Th1) cells . Plays a role in angiogenesis by inducing VEGF production synergistically with TNF and IL6 . Involved in transduction of inflammation downstream of pyroptosis: its mature form is specifically released in the extracellular milieu by passing through the gasdermin-D (GSDMD) pore .

### APPLICATION

To ensure optimal assay performance, AREX recommends conducting reagent titration tailored to each testing system for optimal detection results.

WB	1:500 - 1:1000
----	----------------

\*Results are sample-specific. Please refer to your local assay conditions and test parameters for reference.

### PRODUCT OVERVIEW

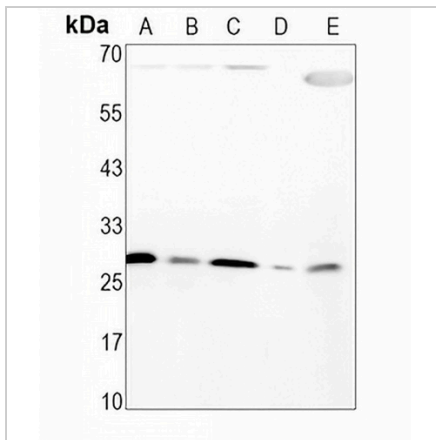
Description	Recombinant rabbit monoclonal antibody to IL-1 beta
Specificity	Recognizes endogenous levels of IL-1 beta protein
Antibody Type	Primary antibody, Recombinant
Immunogen	Recombinant fusion protein of human IL-1 beta. The exact sequence is proprietary.
Purification	The antibody was purified by immunogen affinity chromatography.
Molecular Weight	Predicted: 30 kD; Observed: 28 kD
Form/Buffer	Liquid in PBS, pH 7.4, containing 50% glycerol, 0.2% BSA and 0.01% sodium azide.
Alternative Names	IL1F2; Interleukin-1 beta; IL-1 beta; Catabolin
Gene Symbol	IL1B
Entrez Gene	3553(Human); 16176(Mouse); 16176(Rat)
SwissProt	P01584(Human); P10749(Mouse); Q63264(Rat)

\*AREX continuously optimizes our products. Webpage content may not reflect the latest updates. For inquiries, please contact [info@arexbio.com](mailto:info@arexbio.com) or your local distributor.

\*Clone Number, Reactivity, Source/Host and Clonality can be found in the product name and Key Features section above.

**DATASHEET****IL-1 beta Rabbit Monoclonal Antibody(C1592)**

CAT. NO. AMA01204

**DATA**

Western blot analysis of IL-1 beta expression in HUT78 (A), BV2 (B), RAW264.7 (C), mouse lung (D), rat lung (E) whole cell lysates. (Predicted band size: 30 kDa; Observed band size: 28 kDa)

**STORAGE**

Store at 4°C short term. For long term storage, store at -20°C, avoiding freeze/thaw cycles.

**NOTE**

For Research Use Only. Not for diagnostic, therapeutics, prophylactic or in vivo use.