

## DATASHEET

# CABP1 Rabbit Monoclonal Antibody(C1605)

CAT. NO. AMA01217

### KEY FEATURES

Target	CABP1	Source / Host	Rabbit
Reactivity	Human	Clonality	Monoclonal
Applications	WB	Conjugation	Unconjugated
Form / Buffer	Liquid in PBS, pH 7.4, containing 50% glycerol, 0.2% BSA and 0.01% sodium azide.	Storage	at-20°C

### BACKGROUND

Modulates calcium-dependent activity of inositol 1,4,5-triphosphate receptors (ITPRs) . Inhibits agonist-induced intracellular calcium signaling . Enhances inactivation and does not support calcium-dependent facilitation of voltage-dependent P/Q-type calcium channels . Causes calcium-dependent facilitation and inhibits inactivation of L-type calcium channels by binding to the same sites as calmodulin in the C-terminal domain of CACNA1C, but has an opposite effect on channel function . Suppresses the calcium-dependent inactivation of CACNA1D . Inhibits TRPC5 channels . Prevents NMDA receptor-induced cellular degeneration. Required for the normal transfer of light signals through the retina .

### APPLICATION

To ensure optimal assay performance, AREX recommends conducting reagent titration tailored to each testing system for optimal detection results.

WB	1:500 - 1:1000
----	----------------

\*Results are sample-specific. Please refer to your local assay conditions and test parameters for reference.

### PRODUCT OVERVIEW

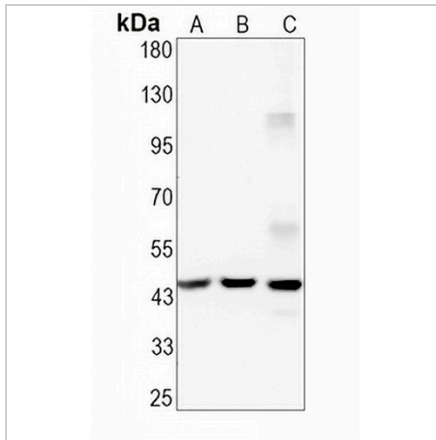
Description	Recombinant rabbit monoclonal antibody to CABP1
Specificity	Recognizes endogenous levels of CABP1 protein
Antibody Type	Primary antibody, Recombinant
Immunogen	KLH-conjugated synthetic peptide encompassing a sequence within human CABP1. The exact sequence is proprietary.
Purification	The antibody was purified by immunogen affinity chromatography.
Molecular Weight	Predicted: 39 kD; Observed: 45 kD
Form/Buffer	Liquid in PBS, pH 7.4, containing 50% glycerol, 0.2% BSA and 0.01% sodium azide.
Alternative Names	Calcium-binding protein 1; CaBP1; Calbrain; Caldendrin
Gene Symbol	CABP1
Entrez Gene	9478(Human)
SwissProt	Q9NZU7(Human)

\*AREX continuously optimizes our products. Webpage content may not reflect the latest updates. For inquiries, please contact [info@arexbio.com](mailto:info@arexbio.com) or your local distributor.

\*Clone Number, Reactivity, Source/Host and Clonality can be found in the product name and Key Features section above.

**DATASHEET****CABP1 Rabbit Monoclonal Antibody(C1605)**

CAT. NO. AMA01217

**DATA**

Western blot analysis of CABP1 expression in LO2 (A), A2780 (B), HUT78 (C) whole cell lysates. (Predicted band size: 39 kD; Observed band size: 45 kD)

**STORAGE**

Store at 4°C short term. For long term storage, store at -20°C, avoiding freeze/thaw cycles.

**NOTE**

For Research Use Only. Not for diagnostic, therapeutics, prophylactic or in vivo use.