

## DATASHEET

# BCL2 Rabbit Monoclonal Antibody(C1621)

CAT. NO. AMA01233

### KEY FEATURES

Target	BCL2	Source / Host	Rabbit
Reactivity	Human, Rat	Clonality	Monoclonal
Applications	WB	Conjugation	Unconjugated
Form / Buffer	Liquid in PBS, pH 7.4, containing 50% glycerol, 0.2% BSA and 0.01% sodium azide.	Storage	at-20°C

### BACKGROUND

Suppresses apoptosis in a variety of cell systems including factor-dependent lymphohematopoietic and neural cells . Regulates cell death by controlling the mitochondrial membrane permeability . Appears to function in a feedback loop system with caspases . Inhibits caspase activity either by preventing the release of cytochrome c from the mitochondria and/or by binding to the apoptosis-activating factor (APAF-1) . Also acts as an inhibitor of autophagy: interacts with BECN1 and AMBRA1 during non-starvation conditions and inhibits their autophagy function . May attenuate inflammation by impairing NLRP1-inflammasome activation, hence CASP1 activation and IL1B release .

### APPLICATION

To ensure optimal assay performance, AREX recommends conducting reagent titration tailored to each testing system for optimal detection results.

WB	1:500 - 1:1000
----	----------------

\*Results are sample-specific. Please refer to your local assay conditions and test parameters for reference.

### PRODUCT OVERVIEW

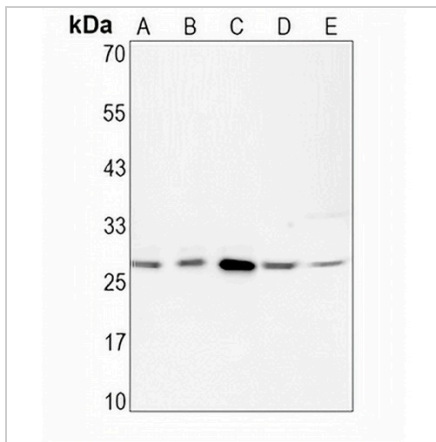
Description	Recombinant rabbit monoclonal antibody to BCL2
Specificity	Recognizes endogenous levels of BCL2 protein
Antibody Type	Primary antibody, Recombinant
Immunogen	Recombinant fusion protein of human BCL2. The exact sequence is proprietary.
Purification	The antibody was purified by immunogen affinity chromatography.
Molecular Weight	Predicted: 26 kD; Observed: 26 kD
Form/Buffer	Liquid in PBS, pH 7.4, containing 50% glycerol, 0.2% BSA and 0.01% sodium azide.
Alternative Names	Apoptosis regulator Bcl-2
Gene Symbol	BCL2
Entrez Gene	596(Human); 24224(Rat)
SwissProt	P10415(Human); P49950(Rat)

\*AREX continuously optimizes our products. Webpage content may not reflect the latest updates. For inquiries, please contact [info@arexbio.com](mailto:info@arexbio.com) or your local distributor.

\*Clone Number, Reactivity, Source/Host and Clonality can be found in the product name and Key Features section above.

**DATASHEET****BCL2 Rabbit Monoclonal Antibody(C1621)**

CAT. NO. AMA01233

**DATA**

Western blot analysis of BCL2 expression in H1792 (A), A2780 (B), HUT78 (C), rat spleen (D), rat kidney (E) whole cell lysates. (Predicted band size: 26 kD; Observed band size: 26 kD)

**STORAGE**

Store at 4°C short term. For long term storage, store at -20°C, avoiding freeze/thaw cycles.

**NOTE**

For Research Use Only. Not for diagnostic, therapeutics, prophylactic or in vivo use.