

DATASHEET

MIF Rabbit Monoclonal Antibody(C1624)

CAT. NO. AMA01236

KEY FEATURES

Target	MIF	Source / Host	Rabbit
Reactivity	Human, Mouse, Rat	Clonality	Monoclonal
Applications	WB	Conjugation	Unconjugated
Form / Buffer	Liquid in PBS, pH 7.4, containing 50% glycerol, 0.2% BSA and 0.01% sodium azide.	Storage	at-20°C

BACKGROUND

Pro-inflammatory cytokine involved in the innate immune response to bacterial pathogens . The expression of MIF at sites of inflammation suggests a role as mediator in regulating the function of macrophages in host defense . Counteracts the anti-inflammatory activity of glucocorticoids . Has phenylpyruvate tautomerase and dopachrome tautomerase activity (in vitro), but the physiological substrate is not known . It is not clear whether the tautomerase activity has any physiological relevance, and whether it is important for cytokine activity .

APPLICATION

To ensure optimal assay performance, AREX recommends conducting reagent titration tailored to each testing system for optimal detection results.

WB	1:500 - 1:1000
----	----------------

*Results are sample-specific. Please refer to your local assay conditions and test parameters for reference.

PRODUCT OVERVIEW

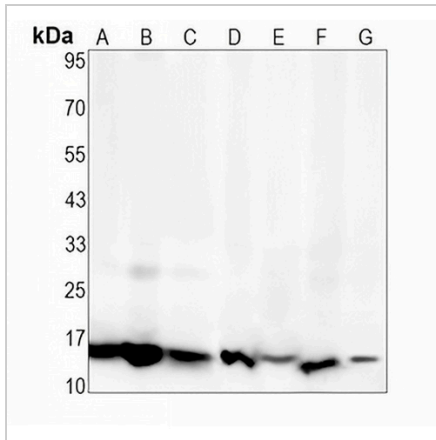
Description	Recombinant rabbit monoclonal antibody to MIF
Specificity	Recognizes endogenous levels of MIF protein
Antibody Type	Primary antibody, Recombinant
Immunogen	KLH-conjugated synthetic peptide encompassing a sequence within human MIF. The exact sequence is proprietary.
Purification	The antibody was purified by immunogen affinity chromatography.
Molecular Weight	Predicted: 12 kD; Observed: 12 kD
Form/Buffer	Liquid in PBS, pH 7.4, containing 50% glycerol, 0.2% BSA and 0.01% sodium azide.
Alternative Names	GLIF; MMIF; Macrophage migration inhibitory factor; MIF; Glycosylation-inhibiting factor; GIF; L-dopachrome isomerase; L-dopachrome tautomerase; Phenylpyruvate tautomerase
Gene Symbol	MIF
Entrez Gene	4282(Human); 17319(Mouse); 81683(Rat)
SwissProt	P14174(Human); P34884(Mouse); P30904(Rat)

*AREX continuously optimizes our products. Webpage content may not reflect the latest updates. For inquiries, please contact info@arexbio.com or your local distributor.

*Clone Number, Reactivity, Source/Host and Clonality can be found in the product name and Key Features section above.

DATASHEET**MIF Rabbit Monoclonal Antibody(C1624)**

CAT. NO. AMA01236

DATA

Western blot analysis of MIF expression in A431 (A), MCF7 (B), K562 (C), mouse kidney (D), mouse lung (E), rat kidney (F), rat lung (G) whole cell lysates. (Predicted band size: 12 kD; Observed band size: 12 kD)

STORAGE

Store at 4°C short term. For long term storage, store at -20°C, avoiding freeze/thaw cycles.

NOTE

For Research Use Only. Not for diagnostic, therapeutics, prophylactic or in vivo use.