

DATASHEET

CRABP1 Rabbit Monoclonal Antibody(C1640)

CAT. NO. AMA01252

KEY FEATURES

Target	CRABP1	Source / Host	Rabbit
Reactivity	Human	Clonality	Monoclonal
Applications	WB	Conjugation	Unconjugated
Form / Buffer	Liquid in PBS, pH 7.4, containing 50% glycerol, 0.2% BSA and 0.01% sodium azide.	Storage	at-20°C

BACKGROUND

Cytosolic CRABPs may regulate the access of retinoic acid to the nuclear retinoic acid receptors.

APPLICATION

To ensure optimal assay performance, AREX recommends conducting reagent titration tailored to each testing system for optimal detection results.

WB	1:500 - 1:1000
----	----------------

*Results are sample-specific. Please refer to your local assay conditions and test parameters for reference.

PRODUCT OVERVIEW

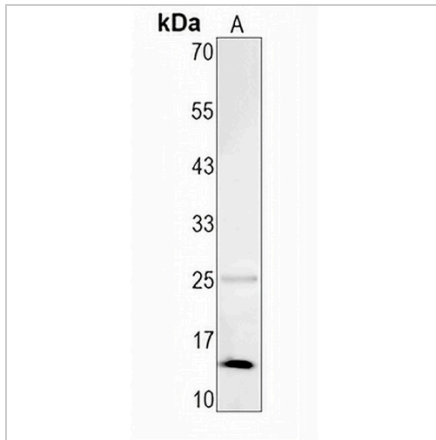
Description	Recombinant rabbit monoclonal antibody to CRABP1
Specificity	Recognizes endogenous levels of CRABP1 protein
Antibody Type	Primary antibody, Recombinant
Immunogen	KLH-conjugated synthetic peptide encompassing a sequence within human CRABP1. The exact sequence is proprietary.
Purification	The antibody was purified by immunogen affinity chromatography.
Molecular Weight	Predicted: 15 kD; Observed: 15 kD
Form/Buffer	Liquid in PBS, pH 7.4, containing 50% glycerol, 0.2% BSA and 0.01% sodium azide.
Alternative Names	RBP5; Cellular retinoic acid-binding protein 1; Cellular retinoic acid-binding protein I; CRABP-I
Gene Symbol	CRABP1
Entrez Gene	1381(Human)
SwissProt	P29762(Human)

*AREX continuously optimizes our products. Webpage content may not reflect the latest updates. For inquiries, please contact info@arexbio.com or your local distributor.

*Clone Number, Reactivity, Source/Host and Clonality can be found in the product name and Key Features section above.

DATASHEET**CRABP1 Rabbit Monoclonal Antibody(C1640)**

CAT. NO. AMA01252

DATA

Western blot analysis of CRABP1 expression in A2780 (A) whole cell lysates. (Predicted band size: 15 kD; Observed band size: 15 kD)

STORAGE

Store at 4°C short term. For long term storage, store at -20°C, avoiding freeze/thaw cycles.

NOTE

For Research Use Only. Not for diagnostic, therapeutics, prophylactic or in vivo use.