

## DATASHEET

# CARS Rabbit Monoclonal Antibody(C1663)

CAT. NO. AMA01275

### KEY FEATURES

Target	CARS	Source / Host	Rabbit
Reactivity	Human	Clonality	Monoclonal
Applications	WB	Conjugation	Unconjugated
Form / Buffer	Liquid in PBS, pH 7.4, containing 50% glycerol, 0.2% BSA and 0.01% sodium azide.	Storage	at-20°C

### BACKGROUND

Catalyzes the ATP-dependent ligation of cysteine to tRNA(Cys).

### APPLICATION

To ensure optimal assay performance, AREX recommends conducting reagent titration tailored to each testing system for optimal detection results.

WB	1:500 - 1:1000
----	----------------

\*Results are sample-specific. Please refer to your local assay conditions and test parameters for reference.

### PRODUCT OVERVIEW

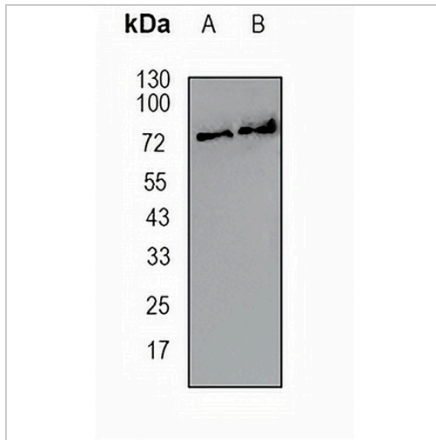
Description	Recombinant rabbit monoclonal antibody to CARS
Specificity	Recognizes endogenous levels of CARS protein
Antibody Type	Primary antibody, Recombinant
Immunogen	KLH-conjugated synthetic peptide encompassing a sequence within human CARS protein. The exact sequence is proprietary.
Purification	The antibody was purified by immunogen affinity chromatography.
Molecular Weight	Predicted: 85 kD; Observed: 75 kD
Form/Buffer	Liquid in PBS, pH 7.4, containing 50% glycerol, 0.2% BSA and 0.01% sodium azide.
Alternative Names	Cysteine--tRNA ligase, cytoplasmic; CysteinyI-tRNA synthetase; CysRS
Gene Symbol	CARS
Entrez Gene	833(Human)
SwissProt	P49589(Human)

\*AREX continuously optimizes our products. Webpage content may not reflect the latest updates. For inquiries, please contact [info@arexbio.com](mailto:info@arexbio.com) or your local distributor.

\*Clone Number, Reactivity, Source/Host and Clonality can be found in the product name and Key Features section above.

**DATASHEET****CARS Rabbit Monoclonal Antibody(C1663)**

CAT. NO. AMA01275

**DATA**

Western blot analysis of CARS expression in HEK293T (A), MDAMB231 (B) whole cell lysates. (Predicted band size: 85 kD; Observed band size: 75 kD)

**STORAGE**

Store at 4°C short term. For long term storage, store at -20°C, avoiding freeze/thaw cycles.

**NOTE**

For Research Use Only. Not for diagnostic, therapeutics, prophylactic or in vivo use.