

DATASHEET

SLC31A1 Rabbit Monoclonal Antibody(C1670)

CAT. NO. AMA01282

KEY FEATURES

Target	SLC31A1	Source / Host	Rabbit
Reactivity	Human, Mouse, Rat	Clonality	Monoclonal
Applications	WB	Conjugation	Unconjugated
Form / Buffer	Liquid in PBS, pH 7.4, containing 50% glycerol, 0.2% BSA and 0.01% sodium azide.	Storage	at-20°C

BACKGROUND

Uniporter that mediates the transport of copper(1+) from the extracellular space to the cytoplasm, across the plasma membrane from the extracellular space to the cytoplasm, across the plasma membrane and delivers directly copper(1+) to specific chaperone such as ATOX1, via a copper(1+)- mediated transient interaction between the C-terminal domain and a copper(1+) chaperone, thus controlling intracellular copper(1+) levels . May function in copper(1+) import from the apical membrane thus may drive intestinal copper absorption . The copper(1+) transport mechanism is sodium-independent, saturable and of high-affinity . Also mediates the uptake of silver(1+) . May function in the influx of the platinum-containing chemotherapeutic agents .

APPLICATION

To ensure optimal assay performance, AREX recommends conducting reagent titration tailored to each testing system for optimal detection results.

WB	1:500 - 1:1000
----	----------------

*Results are sample-specific. Please refer to your local assay conditions and test parameters for reference.

PRODUCT OVERVIEW

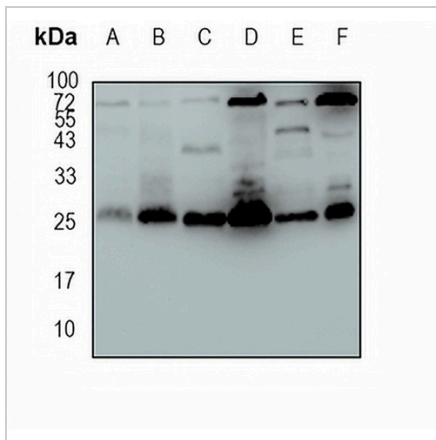
Description	Recombinant rabbit monoclonal antibody to SLC31A1
Specificity	Recognizes endogenous levels of SLC31A1 protein
Antibody Type	Primary antibody, Recombinant
Immunogen	KLH-conjugated synthetic peptide encompassing a sequence within human SLC31A1 protein. The exact sequence is proprietary.
Purification	The antibody was purified by immunogen affinity chromatography.
Molecular Weight	Predicted: 21 kD; Observed: 26 kD
Form/Buffer	Liquid in PBS, pH 7.4, containing 50% glycerol, 0.2% BSA and 0.01% sodium azide.
Alternative Names	COPT1; CTR1; High affinity copper uptake protein 1; Copper transporter 1; hCTR1; Solute carrier family 31 member 1
Gene Symbol	SLC31A1
Entrez Gene	1317(Human); 20529(Mouse); 171135(Rat)
SwissProt	O15431(Human); Q8K211(Mouse); Q9JK41(Rat)

*AREX continuously optimizes our products. Webpage content may not reflect the latest updates. For inquiries, please contact info@arexbio.com or your local distributor.

*Clone Number, Reactivity, Source/Host and Clonality can be found in the product name and Key Features section above.

DATASHEET**SLC31A1 Rabbit Monoclonal Antibody(C1670)**

CAT. NO. AMA01282

DATA

Western blot analysis of SLC31A1 expression in mouse liver (A), mouse kidney (B), rat kidney (C), rat brain (D), HEK293T (E), MDAMB231 (F) whole cell lysates. (Predicted band size: 21 kD; Observed band size: 26 kD)

STORAGE

Store at 4°C short term. For long term storage, store at -20°C, avoiding freeze/thaw cycles.

NOTE

For Research Use Only. Not for diagnostic, therapeutics, prophylactic or in vivo use.