

DATASHEET

RASA1 Rabbit Monoclonal Antibody(C1676)

CAT. NO. AMA01288

KEY FEATURES

Target	RASA1	Source / Host	Rabbit
Reactivity	Human, Mouse, Rat	Clonality	Monoclonal
Applications	WB	Conjugation	Unconjugated
Form / Buffer	Liquid in PBS, pH 7.4, containing 50% glycerol, 0.2% BSA and 0.01% sodium azide.	Storage	at-20°C

BACKGROUND

GTPase-activating protein (GAP) that stimulates the intrinsic GTPase activity of Ras proteins, such as NRAS, facilitating their transition from the active GTP-bound state to the inactive GDP-bound state, thereby terminating Ras signaling.

APPLICATION

To ensure optimal assay performance, AREX recommends conducting reagent titration tailored to each testing system for optimal detection results.

WB	1:500 - 1:1000
----	----------------

*Results are sample-specific. Please refer to your local assay conditions and test parameters for reference.

PRODUCT OVERVIEW

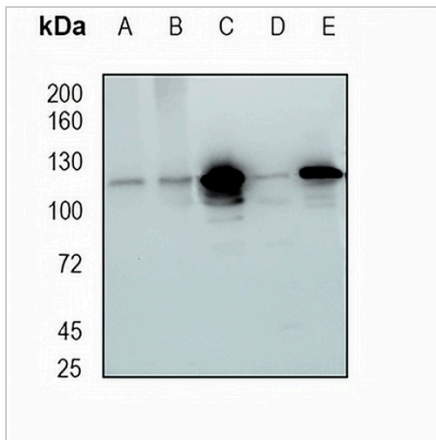
Description	Recombinant rabbit monoclonal antibody to RASA1
Specificity	Recognizes endogenous levels of RASA1 protein
Antibody Type	Primary antibody, Recombinant
Immunogen	KLH-conjugated synthetic peptide encompassing a sequence within human RASA1 protein. The exact sequence is proprietary.
Purification	The antibody was purified by immunogen affinity chromatography.
Molecular Weight	Predicted: 116 kD; Observed: 116 kD
Form/Buffer	Liquid in PBS, pH 7.4, containing 50% glycerol, 0.2% BSA and 0.01% sodium azide.
Alternative Names	GAP; RASA; Ras GTPase-activating protein 1; GAP; GTPase-activating protein; RasGAP; Ras p21 protein activator; p120GAP
Gene Symbol	RASA1
Entrez Gene	5921(Human); 25676(Rat)
SwissProt	P20936(Human); P50904(Rat)

*AREX continuously optimizes our products. Webpage content may not reflect the latest updates. For inquiries, please contact info@arexbio.com or your local distributor.

*Clone Number, Reactivity, Source/Host and Clonality can be found in the product name and Key Features section above.

DATASHEET**RASA1 Rabbit Monoclonal Antibody(C1676)**

CAT. NO. AMA01288

DATA

Western blot analysis of RASA1 expression in mouse liver (A), mouse kidney (B), rat brain (C), HEK293T (D), MDAMB231 (E) whole cell lysates. (Predicted band size: 116 kD; Observed band size: 116 kD)

STORAGE

Store at 4°C short term. For long term storage, store at -20°C, avoiding freeze/thaw cycles.

NOTE

For Research Use Only. Not for diagnostic, therapeutics, prophylactic or in vivo use.