

DATASHEET

CLPTM1 Rabbit Monoclonal Antibody(C1680)

CAT. NO. AMA01292

KEY FEATURES

Target	CLPTM1	Source / Host	Rabbit
Reactivity	Human, Mouse, Rat	Clonality	Monoclonal
Applications	WB	Conjugation	Unconjugated
Form / Buffer	Liquid in PBS, pH 7.4, containing 50% glycerol, 0.2% BSA and 0.01% sodium azide.	Storage	at-20°C

BACKGROUND

Involved in GABAergic but not glutamatergic transmission. Binds and traps GABAA receptors in the endoplasmic reticulum (ER). Modulates postsynaptic GABAergic transmission, and therefore inhibitory neurotransmission, by reducing the plasma membrane expression of these receptors. Altered GABAergic signaling is one among many causes of cleft palate . Might function as a lipid scramblase, translocating lipids in membranes from one leaflet to the other one . Required for efficient glycosylphosphatidylinositol (GPI) inositol deacylation in the ER, which is a crucial step to switch GPI-anchored proteins (GPI-APs) from protein folding to transport states .

APPLICATION

To ensure optimal assay performance, AREX recommends conducting reagent titration tailored to each testing system for optimal detection results.

WB	1:500 - 1:1000
----	----------------

*Results are sample-specific. Please refer to your local assay conditions and test parameters for reference.

PRODUCT OVERVIEW

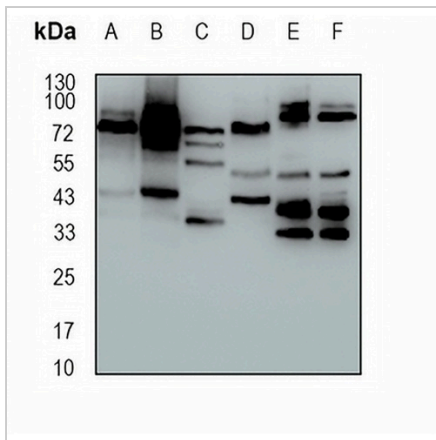
Description	Recombinant rabbit monoclonal antibody to CLPTM1
Specificity	Recognizes endogenous levels of CLPTM1 protein
Antibody Type	Primary antibody, Recombinant
Immunogen	KLH-conjugated synthetic peptide encompassing a sequence within human CLPTM1 protein. The exact sequence is proprietary.
Purification	The antibody was purified by immunogen affinity chromatography.
Molecular Weight	Predicted: 76 kD; Observed: 76 kD
Form/Buffer	Liquid in PBS, pH 7.4, containing 50% glycerol, 0.2% BSA and 0.01% sodium azide.
Alternative Names	Cleft lip and palate transmembrane protein 1
Gene Symbol	CLPTM1
Entrez Gene	1209(Human); 56457(Mouse)
SwissProt	O96005(Human); Q8VBZ3(Mouse)

*AREX continuously optimizes our products. Webpage content may not reflect the latest updates. For inquiries, please contact info@arexbio.com or your local distributor.

*Clone Number, Reactivity, Source/Host and Clonality can be found in the product name and Key Features section above.

DATASHEET**CLPTM1 Rabbit Monoclonal Antibody(C1680)**

CAT. NO. AMA01292

DATA

Western blot analysis of CLPTM1 expression in mouse liver (A), mouse kidney (B), rat kidney (C), rat brain (D), HEK293T (E), MDAMB231 (F) whole cell lysates. (Predicted band size: 76 kD; Observed band size: 76 kD)

STORAGE

Store at 4°C short term. For long term storage, store at -20°C, avoiding freeze/thaw cycles.

NOTE

For Research Use Only. Not for diagnostic, therapeutics, prophylactic or in vivo use.