

**DATASHEET**

**ALDH7A1 Rabbit Monoclonal Antibody(C1689)**

CAT. NO. AMA01301

**KEY FEATURES**

|               |  |               |              |
|---------------|--|---------------|--------------|
| Target        | ALDH7A1  | Source / Host | Rabbit       |
| Reactivity    | Human, Mouse   | Clonality     | Monoclonal   |
| Applications  | WB   | Conjugation   | Unconjugated |
| Form / Buffer | Liquid in PBS, pH 7.4, containing 50% glycerol, 0.2% BSA and 0.01% sodium azide. | Storage       | at-20°C      |

**BACKGROUND**

Aldehyde dehydrogenase enzyme that mediates important protective effects . Protects cells from oxidative stress by metabolizing a number of lipid peroxidation-derived aldehydes . Involved in cellular defense against hyperosmotic stress by metabolizing betaine aldehyde to betaine, an important cellular osmolyte and methyl donor .

**APPLICATION**

To ensure optimal assay performance, AREX recommends conducting reagent titration tailored to each testing system for optimal detection results.

|    |                |
|----|----------------|
| WB | 1:500 - 1:1000 |
|----|----------------|

\*Results are sample-specific. Please refer to your local assay conditions and test parameters for reference.

**PRODUCT OVERVIEW**

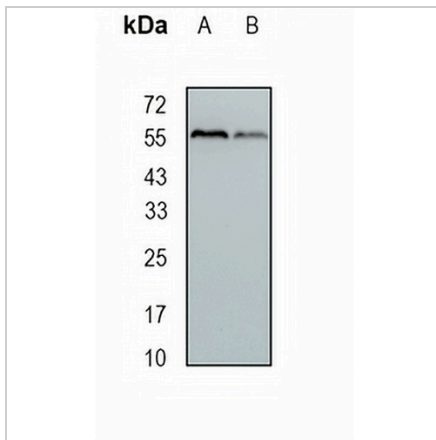
|                   |  |
|-------------------|--|
| Description       | Recombinant rabbit monoclonal antibody to ALDH7A1  |
| Specificity       | Recognizes endogenous levels of ALDH7A1 protein  |
| Antibody Type     | Primary antibody, Recombinant  |
| Immunogen         | KLH-conjugated synthetic peptide encompassing a sequence within human ALDH7A1 protein. The exact sequence is proprietary.  |
| Purification      | The antibody was purified by immunogen affinity chromatography.  |
| Molecular Weight  | Predicted: 58 kD; Observed: 55 kD  |
| Form/Buffer       | Liquid in PBS, pH 7.4, containing 50% glycerol, 0.2% BSA and 0.01% sodium azide.   |
| Alternative Names | ATQ1; Alpha-amino adipic semialdehyde dehydrogenase; Alpha-AASA dehydrogenase; Aldehyde dehydrogenase family 7 member A1; Antiquitin-1; Betaine aldehyde dehydrogenase; Delta1-piperidine-6-carboxylate dehydrogenase; P6c dehydrogenase |
| Gene Symbol       | ALDH7A1  |
| Entrez Gene       | 501(Human); 110695(Mouse)  |
| SwissProt         | P49419(Human); Q9DBF1(Mouse)   |

\*AREX continuously optimizes our products. Webpage content may not reflect the latest updates. For inquiries, please contact [info@arexbio.com](mailto:info@arexbio.com) or your local distributor.

\*Clone Number, Reactivity, Source/Host and Clonality can be found in the product name and Key Features section above.

**DATASHEET****ALDH7A1 Rabbit Monoclonal Antibody(C1689)**

CAT. NO. AMA01301

**DATA**

Western blot analysis of ALDH7A1 expression in mouse liver (A), mouse kidney (B) whole cell lysates. (Predicted band size: 58 kD; Observed band size: 55 kD)

**STORAGE**

Store at 4°C short term. For long term storage, store at -20°C, avoiding freeze/thaw cycles.

**NOTE**

For Research Use Only. Not for diagnostic, therapeutics, prophylactic or in vivo use.