

DATASHEET

STAMPB Rabbit Monoclonal Antibody(C1690)

CAT. NO. AMA01302

KEY FEATURES

Target	STAMPB	Source / Host	Rabbit
Reactivity	Human, Rat	Clonality	Monoclonal
Applications	WB	Conjugation	Unconjugated
Form / Buffer	Liquid in PBS, pH 7.4, containing 50% glycerol, 0.2% BSA and 0.01% sodium azide.	Storage	at-20°C

BACKGROUND

Zinc metalloprotease that specifically cleaves 'Lys-63'-linked polyubiquitin chains . Does not cleave 'Lys-48'-linked polyubiquitin chains . Plays a role in signal transduction for cell growth and MYC induction mediated by IL-2 and GM-CSF . Potentiates BMP (bone morphogenetic protein) signaling by antagonizing the inhibitory action of SMAD6 and SMAD7 . Has a key role in regulation of cell surface receptor-mediated endocytosis and ubiquitin-dependent sorting of receptors to lysosomes . Endosomal localization of STAMPB is required for efficient EGFR degradation but not for its internalization . Involved in the negative regulation of PI3K-AKT-mTOR and RAS-MAP signaling pathways .

APPLICATION

To ensure optimal assay performance, AREX recommends conducting reagent titration tailored to each testing system for optimal detection results.

WB	1:500 - 1:1000
----	----------------

*Results are sample-specific. Please refer to your local assay conditions and test parameters for reference.

PRODUCT OVERVIEW

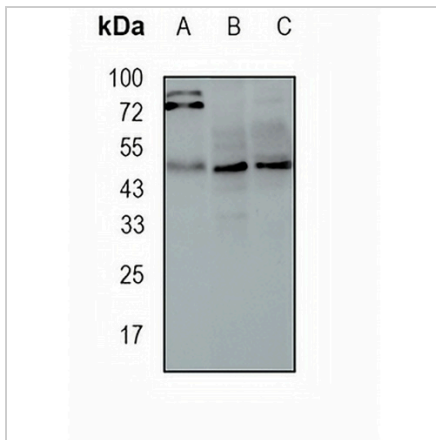
Description	Recombinant rabbit monoclonal antibody to STAMPB
Specificity	Recognizes endogenous levels of STAMPB protein
Antibody Type	Primary antibody, Recombinant
Immunogen	KLH-conjugated synthetic peptide encompassing a sequence within human STAMPB protein. The exact sequence is proprietary.
Purification	The antibody was purified by immunogen affinity chromatography.
Molecular Weight	Predicted: 48 kD; Observed: 48 kD
Form/Buffer	Liquid in PBS, pH 7.4, containing 50% glycerol, 0.2% BSA and 0.01% sodium azide.
Alternative Names	AMSH; STAM-binding protein; Associated molecule with the SH3 domain of STAM; Endosome-associated ubiquitin isopeptidase
Gene Symbol	STAMPB
Entrez Gene	10617(Human); 171565(Rat)
SwissProt	O95630(Human); Q8R424(Rat)

*AREX continuously optimizes our products. Webpage content may not reflect the latest updates. For inquiries, please contact info@arexbio.com or your local distributor.

*Clone Number, Reactivity, Source/Host and Clonality can be found in the product name and Key Features section above.

DATASHEET**STAMPB Rabbit Monoclonal Antibody(C1690)**

CAT. NO. AMA01302

DATA

Western blot analysis of STAMPB expression in rat kidney (A), HEK293T (B), MDAMB231 (C) whole cell lysates. (Predicted band size: 48 kD; Observed band size: 48 kD)

STORAGE

Store at 4°C short term. For long term storage, store at -20°C, avoiding freeze/thaw cycles.

NOTE

For Research Use Only. Not for diagnostic, therapeutics, prophylactic or in vivo use.