

DATASHEET

PLSCR3 Rabbit Monoclonal Antibody(C1696)

CAT. NO. AMA01308

KEY FEATURES

Target	PLSCR3	Source / Host	Rabbit
Reactivity	Human, Mouse, Rat	Clonality	Monoclonal
Applications	WB	Conjugation	Unconjugated
Form / Buffer	Liquid in PBS, pH 7.4, containing 50% glycerol, 0.2% BSA and 0.01% sodium azide.	Storage	at-20°C

BACKGROUND

Catalyzes calcium-induced ATP-independent rapid bidirectional and non-specific movement of the phospholipids (lipid scrambling or lipid flip-flop) between the inner and outer membrane of the mitochondria between the inner and outer membrane of the mitochondria . Plays an important role in mitochondrial respiratory function, morphology, and apoptotic response . Mediates the translocation of cardiolipin from the mitochondrial inner membrane to outer membrane enhancing t-Bid induced cytochrome c release and apoptosis . Enhances TNFSF10-induced apoptosis by regulating the distribution of cardiolipin in the mitochondrial membrane resulting in increased release of apoptogenic factors and consequent amplification of the activity of caspases .

APPLICATION

To ensure optimal assay performance, AREX recommends conducting reagent titration tailored to each testing system for optimal detection results.

WB	1:500 - 1:1000
----	----------------

*Results are sample-specific. Please refer to your local assay conditions and test parameters for reference.

PRODUCT OVERVIEW

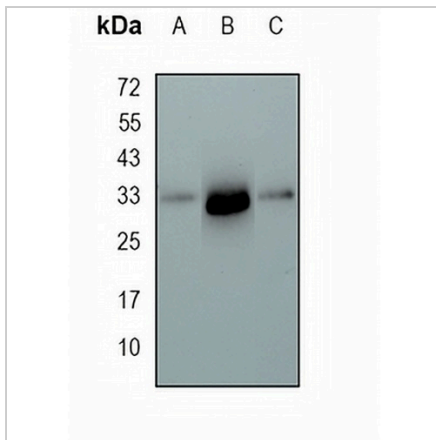
Description	Recombinant rabbit monoclonal antibody to PLSCR3
Specificity	Recognizes endogenous levels of PLSCR3 protein
Antibody Type	Primary antibody, Recombinant
Immunogen	KLH-conjugated synthetic peptide encompassing a sequence within human PLSCR3 protein. The exact sequence is proprietary.
Purification	The antibody was purified by immunogen affinity chromatography.
Molecular Weight	Predicted: 31 kD; Observed: 32 kD
Form/Buffer	Liquid in PBS, pH 7.4, containing 50% glycerol, 0.2% BSA and 0.01% sodium azide.
Alternative Names	Phospholipid scramblase 3; PL scramblase 3; Ca(2+)-dependent phospholipid scramblase 3
Gene Symbol	PLSCR3
Entrez Gene	57048(Human); 70310(Mouse); 360549(Rat)
SwissProt	Q9NRY6(Human); Q9JIZ9(Mouse); Q6QBQ4(Rat)

*AREX continuously optimizes our products. Webpage content may not reflect the latest updates. For inquiries, please contact info@arexbio.com or your local distributor.

*Clone Number, Reactivity, Source/Host and Clonality can be found in the product name and Key Features section above.

DATASHEET**PLSCR3 Rabbit Monoclonal Antibody(C1696)**

CAT. NO. AMA01308

DATA

Western blot analysis of PLSCR3 expression in mouse kidney (A), rat brain (B), MDAMB231 (C) whole cell lysates. (Predicted band size: 31 kD; Observed band size: 32 kD)

STORAGE

Store at 4°C short term. For long term storage, store at -20°C, avoiding freeze/thaw cycles.

NOTE

For Research Use Only. Not for diagnostic, therapeutics, prophylactic or in vivo use.