

DATASHEET

GlyT2 Rabbit Monoclonal Antibody(C1699)

CAT. NO. AMA01311

KEY FEATURES

Target	GlyT2	Source / Host	Rabbit
Reactivity	Human, Mouse, Rat	Clonality	Monoclonal
Applications	WB	Conjugation	Unconjugated
Form / Buffer	Liquid in PBS, pH 7.4, containing 50% glycerol, 0.2% BSA and 0.01% sodium azide.	Storage	at-20°C

BACKGROUND

Sodium- and chloride-dependent glycine transporter . Terminates the action of glycine by its high affinity sodium-dependent reuptake into presynaptic terminals . May be responsible for the termination of neurotransmission at strychnine-sensitive glycinergic synapses .

APPLICATION

To ensure optimal assay performance, AREX recommends conducting reagent titration tailored to each testing system for optimal detection results.

WB	1:500 - 1:1000
----	----------------

*Results are sample-specific. Please refer to your local assay conditions and test parameters for reference.

PRODUCT OVERVIEW

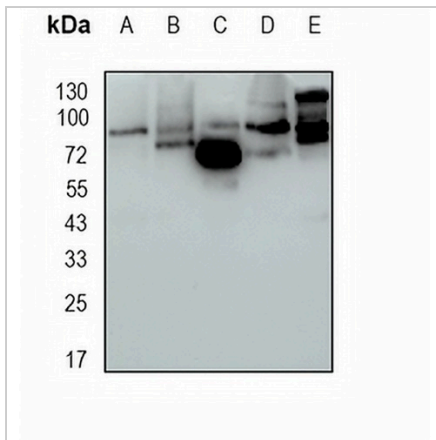
Description	Recombinant rabbit monoclonal antibody to GlyT2
Specificity	Recognizes endogenous levels of GlyT2 protein
Antibody Type	Primary antibody, Recombinant
Immunogen	KLH-conjugated synthetic peptide encompassing a sequence within human GlyT2 protein. The exact sequence is proprietary.
Purification	The antibody was purified by immunogen affinity chromatography.
Molecular Weight	Predicted: 87 kD; Observed: 87 kD
Form/Buffer	Liquid in PBS, pH 7.4, containing 50% glycerol, 0.2% BSA and 0.01% sodium azide.
Alternative Names	GLYT2; NET1; Sodium- and chloride-dependent glycine transporter 2; GlyT-2; GlyT2; Solute carrier family 6 member 5
Gene Symbol	SLC6A5
Entrez Gene	9152(Human); 171148(Rat)
SwissProt	Q9Y345(Human); Q761V0(Mouse); P58295(Rat)

*AREX continuously optimizes our products. Webpage content may not reflect the latest updates. For inquiries, please contact info@arexbio.com or your local distributor.

*Clone Number, Reactivity, Source/Host and Clonality can be found in the product name and Key Features section above.

DATASHEET**GlyT2 Rabbit Monoclonal Antibody(C1699)**

CAT. NO. AMA01311

DATA

Western blot analysis of GlyT2 expression in mouse liver (A), mouse kidney (B), rat kidney (C), rat brain (D), HEK293T (E) whole cell lysates. (Predicted band size: 87 kD; Observed band size: 87 kD)

STORAGE

Store at 4°C short term. For long term storage, store at -20°C, avoiding freeze/thaw cycles.

NOTE

For Research Use Only. Not for diagnostic, therapeutics, prophylactic or in vivo use.