

DATASHEET

NGRH2 Rabbit Monoclonal Antibody(C1703)

CAT. NO. AMA01315

KEY FEATURES

Target	NGRH2	Source / Host	Rabbit
Reactivity	Human, Mouse, Rat	Clonality	Monoclonal
Applications	WB, IF/ICC	Conjugation	Unconjugated
Form / Buffer	Liquid in PBS, pH 7.4, containing 50% glycerol, 0.2% BSA and 0.01% sodium azide.	Storage	at-20°C

BACKGROUND

Cell surface receptor. Plays a functionally redundant role in postnatal brain development and in regulating axon regeneration in the adult central nervous system. Contributes to normal axon migration across the brain midline and normal formation of the corpus callosum. Protects motoneurons against apoptosis; protection against apoptosis is probably mediated by MAG. Plays a role in inhibiting neurite outgrowth and axon regeneration via its binding to neuronal chondroitin sulfate proteoglycans. Binds heparin . Like other family members, plays a role in restricting the number dendritic spines and the number of synapses that are formed during brain development . Signaling mediates activation of Rho and downstream reorganization of the actin cytoskeleton .

APPLICATION

To ensure optimal assay performance, AREX recommends conducting reagent titration tailored to each testing system for optimal detection results.

WB	1:500 - 1:1000
IF/ICC	1:50 - 1:200

*Results are sample-specific. Please refer to your local assay conditions and test parameters for reference.

PRODUCT OVERVIEW

Description	Recombinant rabbit monoclonal antibody to NGRH2
Specificity	Recognizes endogenous levels of NGRH2 protein
Antibody Type	Primary antibody, Recombinant
Immunogen	KLH-conjugated synthetic peptide encompassing a sequence within human NGRH2 protein. The exact sequence is proprietary.
Purification	The antibody was purified by immunogen affinity chromatography.
Molecular Weight	Predicted: 49 kD; Observed: 49 kD
Form/Buffer	Liquid in PBS, pH 7.4, containing 50% glycerol, 0.2% BSA and 0.01% sodium azide.
Alternative Names	NGRH2; NGRL2; Reticulon-4 receptor-like 1; Nogo receptor-like 2; Nogo-66 receptor homolog 2; Nogo-66 receptor-related protein 3; NgR3
Gene Symbol	RTN4RL1
Entrez Gene	146760(Human); 237847(Mouse); 303311(Rat)
SwissProt	Q86UN2(Human); Q8K0S5(Mouse); Q80WD0(Rat)

*AREX continuously optimizes our products. Webpage content may not reflect the latest updates. For inquiries, please contact info@arexbio.com or your local distributor.

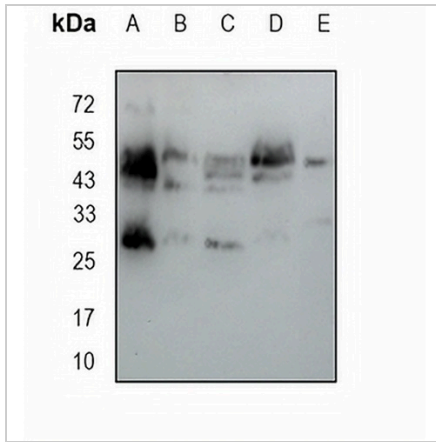
*Clone Number, Reactivity, Source/Host and Clonality can be found in the product name and Key Features section above.

DATASHEET

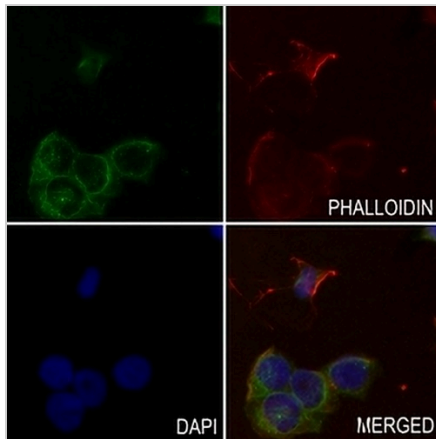
NGRH2 Rabbit Monoclonal Antibody(C1703)

CAT. NO. AMA01315

DATA



Western blot analysis of NGRH2 expression in mouse liver (A), mouse kidney (B), rat kidney (C), rat brain (D), MDAMB231 (E) whole cell lysates. (Predicted band size: 49 kD; Observed band size: 49 kD)



Immunofluorescent analysis of NGRH2 staining in HEK293T cells. Formalin-fixed cells were permeabilized with 0.1% Triton X-100 in TBS for 5-10 minutes and blocked with 3% BSA-PBS for 30 minutes at room temperature. Cells were probed with the primary antibody in 3% BSA-PBS and incubated overnight at 4 °C in a humidified chamber. Cells were washed with PBST and incubated with an AREX® Fluor 488 -conjugated secondary antibody (green) in PBS at room temperature in the dark. Phalloidin - AREX® Fluor 594 was used to stain Actin filaments (red). DAPI was used to stain the cell nuclei (blue).

STORAGE

Store at 4°C short term. For long term storage, store at -20°C, avoiding freeze/thaw cycles.

NOTE

For Research Use Only. Not for diagnostic, therapeutics, prophylactic or in vivo use.