

**DATASHEET**

**KIFC1 Rabbit Monoclonal Antibody(C1706)**

CAT. NO. AMA01318

**KEY FEATURES**

Target	KIFC1	Source / Host	Rabbit
Reactivity	Human	Clonality	Monoclonal
Applications	WB, IP	Conjugation	Unconjugated
Form / Buffer	Liquid in PBS, pH 7.4, containing 50% glycerol, 0.2% BSA and 0.01% sodium azide.	Storage	at-20°C

**BACKGROUND**

Minus end-directed microtubule-dependent motor required for bipolar spindle formation . May contribute to movement of early endocytic vesicles . Regulates cilium formation and structure .

**APPLICATION**

To ensure optimal assay performance, AREX recommends conducting reagent titration tailored to each testing system for optimal detection results.

WB	1:500 - 1:1000
IP	1:10 - 1:50

\*Results are sample-specific. Please refer to your local assay conditions and test parameters for reference.

**PRODUCT OVERVIEW**

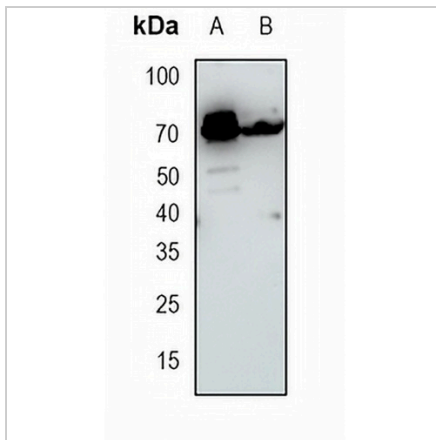
Description	Recombinant rabbit monoclonal antibody to KIFC1
Specificity	Recognizes endogenous levels of KIFC1 protein
Antibody Type	Primary antibody, Recombinant
Immunogen	KLH-conjugated synthetic peptide encompassing a sequence within human KIFC1 protein. The exact sequence is proprietary.
Purification	The antibody was purified by immunogen affinity chromatography.
Molecular Weight	Predicted: 73 kD; Observed: 73 kD
Form/Buffer	Liquid in PBS, pH 7.4, containing 50% glycerol, 0.2% BSA and 0.01% sodium azide.
Alternative Names	HSET; KNSL2; Kinesin-like protein KIFC1; Kinesin-like protein 2; Kinesin-related protein HSET
Gene Symbol	KIFC1
Entrez Gene	3833(Human)
SwissProt	Q9BW19(Human)

\*AREX continuously optimizes our products. Webpage content may not reflect the latest updates. For inquiries, please contact [info@arexbio.com](mailto:info@arexbio.com) or your local distributor.

\*Clone Number, Reactivity, Source/Host and Clonality can be found in the product name and Key Features section above.

**DATASHEET****KIFC1 Rabbit Monoclonal Antibody(C1706)**

CAT. NO. AMA01318

**DATA**

Western blot analysis of KIFC1 expression in HEK293T (A), MDAMB231 (B) whole cell lysates. (Predicted band size: 73 kD; Observed band size: 73 kD)

**STORAGE**

Store at 4°C short term. For long term storage, store at -20°C, avoiding freeze/thaw cycles.

**NOTE**

For Research Use Only. Not for diagnostic, therapeutics, prophylactic or in vivo use.