

DATASHEET

PNMTase Rabbit Monoclonal Antibody(C1716)

CAT. NO. AMA01328

KEY FEATURES

Target	PNMTase	Source / Host	Rabbit
Reactivity	Human, Mouse	Clonality	Monoclonal
Applications	WB	Conjugation	Unconjugated
Form / Buffer	Liquid in PBS, pH 7.4, containing 50% glycerol, 0.2% BSA and 0.01% sodium azide.	Storage	at-20°C

BACKGROUND

Catalyzes the transmethylation of norepinephrine (noradrenaline) to form epinephrine (adrenaline), using S-adenosyl-L-methionine as the methyl donor to form epinephrine (adrenaline), using S-adenosyl-L-methionine as the methyl donor. Other substrates include phenylethanolamine and octopamine. Also methylates normetanephrine.

APPLICATION

To ensure optimal assay performance, AREX recommends conducting reagent titration tailored to each testing system for optimal detection results.

WB	1:500 - 1:1000
----	----------------

*Results are sample-specific. Please refer to your local assay conditions and test parameters for reference.

PRODUCT OVERVIEW

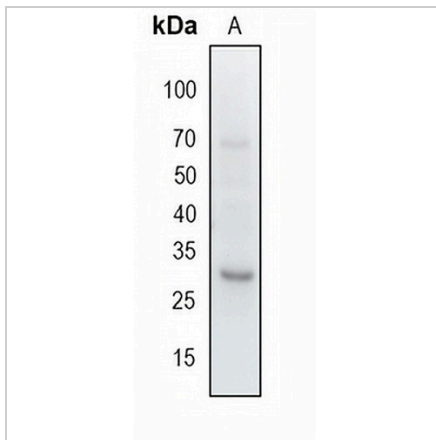
Description	Recombinant rabbit monoclonal antibody to PNMTase
Specificity	Recognizes endogenous levels of PNMTase protein
Antibody Type	Primary antibody, Recombinant
Immunogen	KLH-conjugated synthetic peptide encompassing a sequence within human PNMTase protein. The exact sequence is proprietary.
Purification	The antibody was purified by immunogen affinity chromatography.
Molecular Weight	Predicted: 30 kD; Observed: 30 kD
Form/Buffer	Liquid in PBS, pH 7.4, containing 50% glycerol, 0.2% BSA and 0.01% sodium azide.
Alternative Names	PENT; Phenylethanolamine N-methyltransferase; PNMTase; Noradrenaline N-methyltransferase
Gene Symbol	PNMT
Entrez Gene	5409(Human); 18948(Mouse)
SwissProt	P11086(Human); P40935(Mouse)

*AREX continuously optimizes our products. Webpage content may not reflect the latest updates. For inquiries, please contact info@arexbio.com or your local distributor.

*Clone Number, Reactivity, Source/Host and Clonality can be found in the product name and Key Features section above.

DATASHEET**PNMTase Rabbit Monoclonal Antibody(C1716)**

CAT. NO. AMA01328

DATA

Western blot analysis of PNMTase expression in mouse kidney (A) whole cell lysates.
(Predicted band size: 30 kD; Observed band size: 30 kD)

STORAGE

Store at 4°C short term. For long term storage, store at -20°C, avoiding freeze/thaw cycles.

NOTE

For Research Use Only. Not for diagnostic, therapeutics, prophylactic or in vivo use.