

**DATASHEET**

**Amphiphysin 2 Rabbit Monoclonal Antibody(C1725)**

CAT. NO. AMA01337

**KEY FEATURES**

Target	Amphiphysin 2	Source / Host	Rabbit
Reactivity	Human, Rat	Clonality	Monoclonal
Applications	WB	Conjugation	Unconjugated
Form / Buffer	Liquid in PBS, pH 7.4, containing 50% glycerol, 0.2% BSA and 0.01% sodium azide.	Storage	at-20°C

**BACKGROUND**

Is a key player in the control of plasma membrane curvature, membrane shaping and membrane remodeling. Required in muscle cells for the formation of T-tubules, tubular invaginations of the plasma membrane that function in depolarization-contraction coupling . Is a negative regulator of endocytosis . Is also involved in the regulation of intracellular vesicles sorting, modulation of BACE1 trafficking and the control of amyloid-beta production . In neuronal circuits, endocytosis regulation may influence the internalization of PHF-tau aggregates . May be involved in the regulation of MYC activity and the control cell proliferation . Has actin bundling activity and stabilizes actin filaments against depolymerization in vitro .

**APPLICATION**

To ensure optimal assay performance, AREX recommends conducting reagent titration tailored to each testing system for optimal detection results.

WB	1:500 - 1:1000
----	----------------

\*Results are sample-specific. Please refer to your local assay conditions and test parameters for reference.

**PRODUCT OVERVIEW**

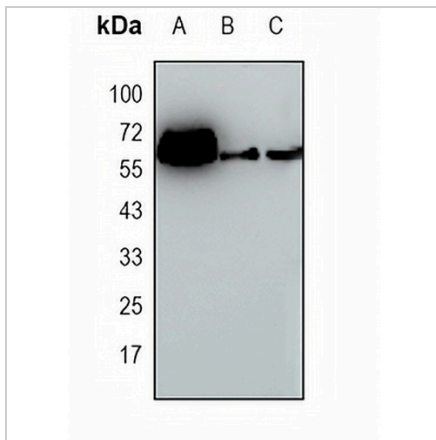
Description	Recombinant rabbit monoclonal antibody to Amphiphysin 2
Specificity	Recognizes endogenous levels of Amphiphysin 2 protein
Antibody Type	Primary antibody, Recombinant
Immunogen	KLH-conjugated synthetic peptide encompassing a sequence within human Amphiphysin 2 protein. The exact sequence is proprietary.
Purification	The antibody was purified by immunogen affinity chromatography.
Molecular Weight	Predicted: 64 kD; Observed: 64 kD
Form/Buffer	Liquid in PBS, pH 7.4, containing 50% glycerol, 0.2% BSA and 0.01% sodium azide.
Alternative Names	AMPHL; Myc box-dependent-interacting protein 1; Amphiphysin II; Amphiphysin-like protein; Box-dependent myc-interacting protein 1; Bridging integrator 1
Gene Symbol	BIN1
Entrez Gene	274(Human); 117028(Rat)
SwissProt	O00499(Human); O08839(Rat)

\*AREX continuously optimizes our products. Webpage content may not reflect the latest updates. For inquiries, please contact [info@arexbio.com](mailto:info@arexbio.com) or your local distributor.

\*Clone Number, Reactivity, Source/Host and Clonality can be found in the product name and Key Features section above.

**DATASHEET****Amphiphysin 2 Rabbit Monoclonal Antibody(C1725)**

CAT. NO. AMA01337

**DATA**

Western blot analysis of Amphiphysin 2 expression in rat brain (A), HEK293T (B), MDAMB231 (C) whole cell lysates. (Predicted band size: 64 kD; Observed band size: 64 kD)

**STORAGE**

Store at 4°C short term. For long term storage, store at -20°C, avoiding freeze/thaw cycles.

**NOTE**

For Research Use Only. Not for diagnostic, therapeutics, prophylactic or in vivo use.