

DATASHEET

PAX2 Rabbit Monoclonal Antibody(C1728)

CAT. NO. AMA01340

KEY FEATURES

Target	PAX2	Source / Host	Rabbit
Reactivity	Human, Mouse, Rat	Clonality	Monoclonal
Applications	WB	Conjugation	Unconjugated
Form / Buffer	Liquid in PBS, pH 7.4, containing 50% glycerol, 0.2% BSA and 0.01% sodium azide.	Storage	at-20°C

BACKGROUND

Transcription factor that may have a role in kidney cell differentiation . Has a critical role in the development of the urogenital tract, the eyes, and the CNS.

APPLICATION

To ensure optimal assay performance, AREX recommends conducting reagent titration tailored to each testing system for optimal detection results.

WB	1:500 - 1:1000
----	----------------

*Results are sample-specific. Please refer to your local assay conditions and test parameters for reference.

PRODUCT OVERVIEW

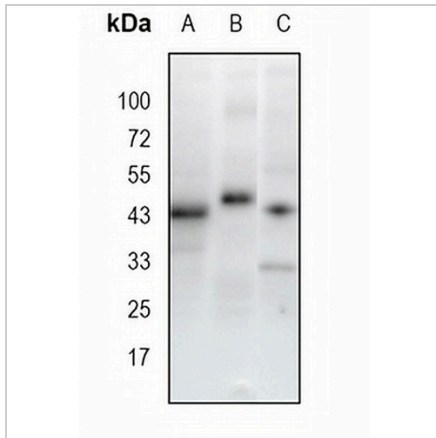
Description	Recombinant rabbit monoclonal antibody to PAX2
Specificity	Recognizes endogenous levels of PAX2 protein
Antibody Type	Primary antibody, Recombinant
Immunogen	KLH-conjugated synthetic peptide encompassing a sequence within human PAX2 protein. The exact sequence is proprietary.
Purification	The antibody was purified by immunogen affinity chromatography.
Molecular Weight	Predicted: 44 kD; Observed: 45 kD
Form/Buffer	Liquid in PBS, pH 7.4, containing 50% glycerol, 0.2% BSA and 0.01% sodium azide.
Alternative Names	Paired box protein Pax-2
Gene Symbol	PAX2
Entrez Gene	5076(Human); 18504(Mouse)
SwissProt	Q02962(Human); P32114(Mouse)

*AREX continuously optimizes our products. Webpage content may not reflect the latest updates. For inquiries, please contact info@arexbio.com or your local distributor.

*Clone Number, Reactivity, Source/Host and Clonality can be found in the product name and Key Features section above.

DATASHEET**PAX2 Rabbit Monoclonal Antibody(C1728)**

CAT. NO. AMA01340

DATA

Western blot analysis of PAX2 expression in mouse kidney (A), rat kidney (B), HEK293T (C) whole cell lysates. (Predicted band size: 44 kD; Observed band size: 45 kD)

STORAGE

Store at 4°C short term. For long term storage, store at -20°C, avoiding freeze/thaw cycles.

NOTE

For Research Use Only. Not for diagnostic, therapeutics, prophylactic or in vivo use.