

## DATASHEET

# DOT1L Rabbit Monoclonal Antibody(C1738)

CAT. NO. AMA01350

### KEY FEATURES

Target	DOT1L	Source / Host	Rabbit
Reactivity	Human	Clonality	Monoclonal
Applications	WB	Conjugation	Unconjugated
Form / Buffer	Liquid in PBS, pH 7.4, containing 50% glycerol, 0.2% BSA and 0.01% sodium azide.	Storage	at-20°C

### BACKGROUND

Histone methyltransferase that methylates 'Lys-79' of histone H3 . Nucleosomes are preferred as substrate compared to free histones . Binds to DNA .

### APPLICATION

To ensure optimal assay performance, AREX recommends conducting reagent titration tailored to each testing system for optimal detection results.

WB	1:500 - 1:1000
----	----------------

\*Results are sample-specific. Please refer to your local assay conditions and test parameters for reference.

### PRODUCT OVERVIEW

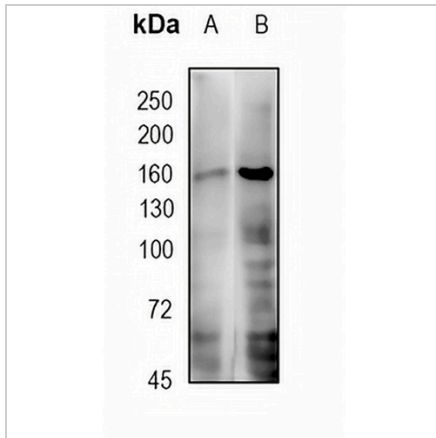
Description	Recombinant rabbit monoclonal antibody to DOT1L
Specificity	Recognizes endogenous levels of DOT1L protein
Antibody Type	Primary antibody, Recombinant
Immunogen	KLH-conjugated synthetic peptide encompassing a sequence within human DOT1L protein. The exact sequence is proprietary.
Purification	The antibody was purified by immunogen affinity chromatography.
Molecular Weight	Predicted: 164 kD; Observed: 164 kD
Form/Buffer	Liquid in PBS, pH 7.4, containing 50% glycerol, 0.2% BSA and 0.01% sodium azide.
Alternative Names	KIAA1814; KMT4; Histone-lysine N-methyltransferase, H3 lysine-79 specific; DOT1-like protein; Histone H3-K79 methyltransferase; H3-K79-HMTase; Lysine N-methyltransferase 4
Gene Symbol	DOT1L
Entrez Gene	84444(Human)
SwissProt	Q8TEK3(Human)

\*AREX continuously optimizes our products. Webpage content may not reflect the latest updates. For inquiries, please contact [info@arexbio.com](mailto:info@arexbio.com) or your local distributor.

\*Clone Number, Reactivity, Source/Host and Clonality can be found in the product name and Key Features section above.

**DATASHEET****DOT1L Rabbit Monoclonal Antibody(C1738)**

CAT. NO. AMA01350

**DATA**

Western blot analysis of DOT1L expression in U251 (A), HeLa (B) whole cell lysates.  
(Predicted band size: 164 kD; Observed band size: 164 kD)

**STORAGE**

Store at 4°C short term. For long term storage, store at -20°C, avoiding freeze/thaw cycles.

**NOTE**

For Research Use Only. Not for diagnostic, therapeutics, prophylactic or in vivo use.