

DATASHEET

RAD21 Rabbit Monoclonal Antibody(C1739)

CAT. NO. AMA01351

KEY FEATURES

Target	RAD21	Source / Host	Rabbit
Reactivity	Human, Mouse	Clonality	Monoclonal
Applications	WB	Conjugation	Unconjugated
Form / Buffer	Liquid in PBS, pH 7.4, containing 50% glycerol, 0.2% BSA and 0.01% sodium azide.	Storage	at-20°C

BACKGROUND

As a member of the cohesin complex, involved in sister chromatid cohesion from the time of DNA replication in S phase to their segregation in mitosis, a function that is essential for proper chromosome segregation, post-replicative DNA repair, and the prevention of inappropriate recombination between repetitive regions . The cohesin complex may also play a role in spindle pole assembly during mitosis . In interphase, cohesins may function in the control of gene expression by binding to numerous sites within the genome . May control RUNX1 gene expression (Probable). Binds to and represses APOB gene promoter . May play a role in embryonic gut development, possibly through the regulation of enteric neuron development .

APPLICATION

To ensure optimal assay performance, AREX recommends conducting reagent titration tailored to each testing system for optimal detection results.

WB	1:500 - 1:1000
----	----------------

*Results are sample-specific. Please refer to your local assay conditions and test parameters for reference.

PRODUCT OVERVIEW

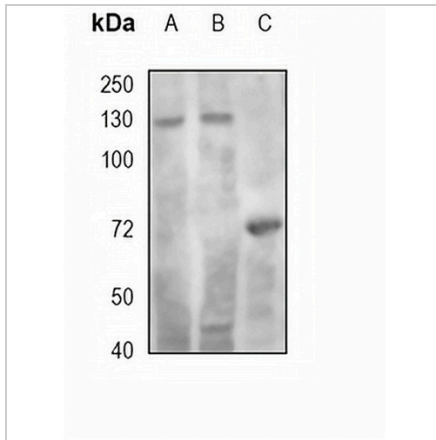
Description	Recombinant rabbit monoclonal antibody to RAD21
Specificity	Recognizes endogenous levels of RAD21 protein
Antibody Type	Primary antibody, Recombinant
Immunogen	KLH-conjugated synthetic peptide encompassing a sequence within human RAD21 protein. The exact sequence is proprietary.
Purification	The antibody was purified by immunogen affinity chromatography.
Molecular Weight	Predicted: 71 kD; Observed: 128, 72 kD
Form/Buffer	Liquid in PBS, pH 7.4, containing 50% glycerol, 0.2% BSA and 0.01% sodium azide.
Alternative Names	HR21; KIAA0078; NXP1; Double-strand-break repair protein rad21 homolog; hHR21; Nuclear matrix protein 1; NXP-1; SCC1 homolog
Gene Symbol	RAD21
Entrez Gene	5885(Human); 19357(Mouse)
SwissProt	O60216(Human); Q61550(Mouse)

*AREX continuously optimizes our products. Webpage content may not reflect the latest updates. For inquiries, please contact info@arexbio.com or your local distributor.

*Clone Number, Reactivity, Source/Host and Clonality can be found in the product name and Key Features section above.

DATASHEET**RAD21 Rabbit Monoclonal Antibody(C1739)**

CAT. NO. AMA01351

DATA

Western blot analysis of RAD21 expression in MCF7 (A), PC3 (B), mouse lung (C) whole cell lysates. (Predicted band size: 71 kD; Observed band size: 128, 72 kD)

STORAGE

Store at 4°C short term. For long term storage, store at -20°C, avoiding freeze/thaw cycles.

NOTE

For Research Use Only. Not for diagnostic, therapeutics, prophylactic or in vivo use.