

## DATASHEET

# ABCD1 Rabbit Monoclonal Antibody(C1745)

CAT. NO. AMA01357

### KEY FEATURES

Target	ABCD1	Source / Host	Rabbit
Reactivity	Human, Mouse, Rat	Clonality	Monoclonal
Applications	WB	Conjugation	Unconjugated
Form / Buffer	Liquid in PBS, pH 7.4, containing 50% glycerol, 0.2% BSA and 0.01% sodium azide.	Storage	at-20°C

### BACKGROUND

ATP-dependent transporter of the ATP-binding cassette (ABC) family involved in the transport of very long chain fatty acid (VLCFA)-CoA from the cytosol to the peroxisome lumen family involved in the transport of very long chain fatty acid (VLCFA)-CoA from the cytosol to the peroxisome lumen . Coupled to the ATP-dependent transporter activity also has a fatty acyl-CoA thioesterase activity (ACOT) and hydrolyzes VLCFA-CoA into VLCFA prior their ATP-dependent transport into peroxisomes, the ACOT activity is essential during this transport process . Thus, plays a role in regulation of VLCFAs and energy metabolism namely, in the degradation and biosynthesis of fatty acids by beta-oxidation, mitochondrial function and microsomal fatty acid elongation .

### APPLICATION

To ensure optimal assay performance, AREX recommends conducting reagent titration tailored to each testing system for optimal detection results.

WB	1:500 - 1:1000
----	----------------

\*Results are sample-specific. Please refer to your local assay conditions and test parameters for reference.

### PRODUCT OVERVIEW

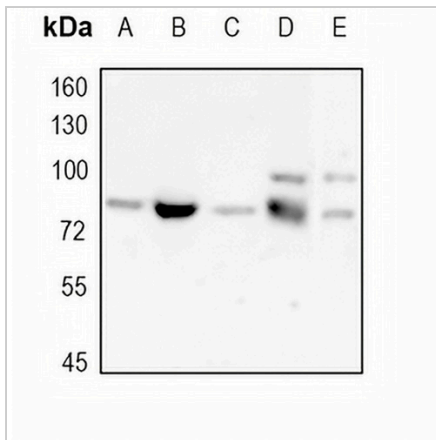
Description	Recombinant rabbit monoclonal antibody to ABCD1
Specificity	Recognizes endogenous levels of ABCD1 protein
Antibody Type	Primary antibody, Recombinant
Immunogen	KLH-conjugated synthetic peptide encompassing a sequence within human ABCD1 protein. The exact sequence is proprietary.
Purification	The antibody was purified by immunogen affinity chromatography.
Molecular Weight	Predicted: 82 kD; Observed: 83 kD
Form/Buffer	Liquid in PBS, pH 7.4, containing 50% glycerol, 0.2% BSA and 0.01% sodium azide.
Alternative Names	ALD; ATP-binding cassette sub-family D member 1; Adrenoleukodystrophy protein; ALDP
Gene Symbol	ABCD1
Entrez Gene	215(Human); 11666(Mouse)
SwissProt	P33897(Human); P48410(Mouse)

\*AREX continuously optimizes our products. Webpage content may not reflect the latest updates. For inquiries, please contact [info@arexbio.com](mailto:info@arexbio.com) or your local distributor.

\*Clone Number, Reactivity, Source/Host and Clonality can be found in the product name and Key Features section above.

**DATASHEET****ABCD1 Rabbit Monoclonal Antibody(C1745)**

CAT. NO. AMA01357

**DATA**

Western blot analysis of ABCD1 expression in HeLa (A), HepG2 (B), PC3 (C), mouse liver (D), rat liver (E) whole cell lysates. (Predicted band size: 82 kD; Observed band size: 83 kD)

**STORAGE**

Store at 4°C short term. For long term storage, store at -20°C, avoiding freeze/thaw cycles.

**NOTE**

For Research Use Only. Not for diagnostic, therapeutics, prophylactic or in vivo use.