

DATASHEET

HIF1 beta Rabbit Monoclonal Antibody(C1749)

CAT. NO. AMA01361

KEY FEATURES

Target	HIF1 beta	Source / Host	Rabbit
Reactivity	Human, Mouse, Rat	Clonality	Monoclonal
Applications	WB	Conjugation	Unconjugated
Form / Buffer	Liquid in PBS, pH 7.4, containing 50% glycerol, 0.2% BSA and 0.01% sodium azide.	Storage	at-20°C

BACKGROUND

Required for activity of the AHR. Upon ligand binding, AHR translocates into the nucleus, where it heterodimerizes with ARNT and induces transcription by binding to xenobiotic response elements (XRE). Not required for the ligand-binding subunit to translocate from the cytosol to the nucleus after ligand binding . Not required for the ligand-binding subunit to translocate from the cytosol to the nucleus after ligand binding . The complex initiates transcription of genes involved in the regulation of a variety of biological processes, including angiogenesis, hematopoiesis, drug and lipid metabolism, cell motility and immune modulation (Probable).

APPLICATION

To ensure optimal assay performance, AREX recommends conducting reagent titration tailored to each testing system for optimal detection results.

WB	1:500 - 1:1000
----	----------------

*Results are sample-specific. Please refer to your local assay conditions and test parameters for reference.

PRODUCT OVERVIEW

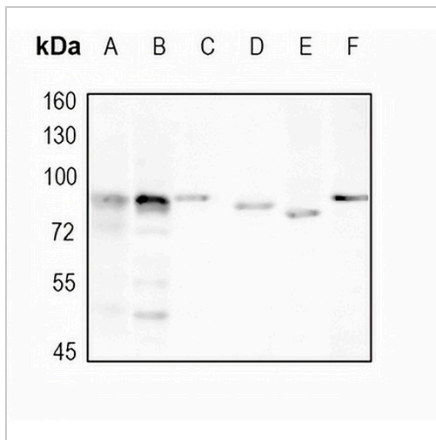
Description	Recombinant rabbit monoclonal antibody to HIF1 beta
Specificity	Recognizes endogenous levels of HIF1 beta protein
Antibody Type	Primary antibody, Recombinant
Immunogen	KLH-conjugated synthetic peptide encompassing a sequence within human HIF1 beta protein. The exact sequence is proprietary.
Purification	The antibody was purified by immunogen affinity chromatography.
Molecular Weight	Predicted: 86 kD; Observed: 87 kD
Form/Buffer	Liquid in PBS, pH 7.4, containing 50% glycerol, 0.2% BSA and 0.01% sodium azide.
Alternative Names	BHLHE2; Aryl hydrocarbon receptor nuclear translocator; ARNT protein; Class E basic helix-loop-helix protein 2; bHLHe2; Dioxin receptor, nuclear translocator; Hypoxia-inducible factor 1-beta; HIF-1-beta; HIF1-beta
Gene Symbol	ARNT
Entrez Gene	405(Human); 11863(Mouse); 25242(Rat)
SwissProt	P27540(Human); P53762(Mouse); P41739(Rat)

*AREX continuously optimizes our products. Webpage content may not reflect the latest updates. For inquiries, please contact info@arexbio.com or your local distributor.

*Clone Number, Reactivity, Source/Host and Clonality can be found in the product name and Key Features section above.

DATASHEET**HIF1 beta Rabbit Monoclonal Antibody(C1749)**

CAT. NO. AMA01361

DATA

Western blot analysis of HIF1 beta expression in THP1 (A), HeLa (B), mouse lung (C), mouse liver (D), rat muscle (E), rat liver (F) whole cell lysates. (Predicted band size: 86 kD; Observed band size: 87 kD)

STORAGE

Store at 4°C short term. For long term storage, store at -20°C, avoiding freeze/thaw cycles.

NOTE

For Research Use Only. Not for diagnostic, therapeutics, prophylactic or in vivo use.