

DATASHEET

Laminin Receptor Rabbit Monoclonal Antibody(C1783)

CAT. NO. AMA01395

KEY FEATURES

Target	Laminin Receptor	Source / Host	Rabbit
Reactivity	Human, Mouse, Rat	Clonality	Monoclonal
Applications	WB, IP	Conjugation	Unconjugated
Form / Buffer	Liquid in PBS, pH 7.4, containing 50% glycerol, 0.2% BSA and 0.01% sodium azide.	Storage	at-20°C

BACKGROUND

Required for the assembly and/or stability of the 40S ribosomal subunit. Required for the processing of the 20S rRNA-precursor to mature 18S rRNA in a late step of the maturation of 40S ribosomal subunits. Also functions as a cell surface receptor for laminin. Plays a role in cell adhesion to the basement membrane and in the consequent activation of signaling transduction pathways. May play a role in cell fate determination and tissue morphogenesis. Acts as a PPP1R16B-dependent substrate of PPP1CA.

APPLICATION

To ensure optimal assay performance, AREX recommends conducting reagent titration tailored to each testing system for optimal detection results.

WB	1:500 - 1:1000
IP	1:10 - 1:50

*Results are sample-specific. Please refer to your local assay conditions and test parameters for reference.

PRODUCT OVERVIEW

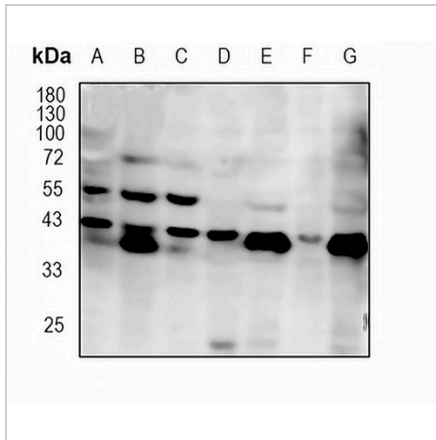
Description	Recombinant rabbit monoclonal antibody to Laminin Receptor
Specificity	Recognizes endogenous levels of Laminin Receptor protein
Antibody Type	Primary antibody, Recombinant
Immunogen	KLH-conjugated synthetic peptide encompassing a sequence within human Laminin Receptor protein. The exact sequence is proprietary.
Purification	The antibody was purified by immunogen affinity chromatography.
Molecular Weight	Predicted: 32 kD; Observed: 42 kD
Form/Buffer	Liquid in PBS, pH 7.4, containing 50% glycerol, 0.2% BSA and 0.01% sodium azide.
Alternative Names	LAMBR; LAMR1; 40S ribosomal protein SA; 37 kDa laminin receptor precursor; 37LRP; 37/67 kDa laminin receptor; LRP/LR; 67 kDa laminin receptor; 67LR; Colon carcinoma laminin-binding protein; Laminin receptor 1; LamR; Laminin-binding protein precursor p40; LBP/p40; Multidrug resistance-associated protein MGr1-Ag; NEM/1CHD4
Gene Symbol	RPSA
Entrez Gene	3921(Human); 102642689;16785(Mouse); 29236(Rat)
SwissProt	P08865(Human); P14206(Mouse); P38983(Rat)

*AREX continuously optimizes our products. Webpage content may not reflect the latest updates. For inquiries, please contact info@arexbio.com or your local distributor.

*Clone Number, Reactivity, Source/Host and Clonality can be found in the product name and Key Features section above.

DATASHEET**Laminin Receptor Rabbit Monoclonal Antibody(C1783)**

CAT. NO. AMA01395

DATA

Western blot analysis of Laminin Receptor expression in PC3 (A), THP1 (B), HeLa (C), mouse liver (D), mouse brain (E), rat liver (F), rat brain whole cell lysates. (Predicted band size: 32 kD; Observed band size: 42 kD)

STORAGE

Store at 4°C short term. For long term storage, store at -20°C, avoiding freeze/thaw cycles.

NOTE

For Research Use Only. Not for diagnostic, therapeutics, prophylactic or in vivo use.