

DATASHEET

BCL11B Rabbit Monoclonal Antibody(C1787)

CAT. NO. AMA01399

KEY FEATURES

Target	BCL11B	Source / Host	Rabbit
Reactivity	Human	Clonality	Monoclonal
Applications	WB	Conjugation	Unconjugated
Form / Buffer	Liquid in PBS, pH 7.4, containing 50% glycerol, 0.2% BSA and 0.01% sodium azide.	Storage	at-20°C

BACKGROUND

Key regulator of both differentiation and survival of T-lymphocytes during thymocyte development in mammals. Essential in controlling the responsiveness of hematopoietic stem cells to chemotactic signals by modulating the expression of the receptors CCR7 and CCR9, which direct the movement of progenitor cells from the bone marrow to the thymus . Is a regulator of IL2 promoter and enhances IL2 expression in activated CD4(+) T-lymphocytes . Tumor-suppressor that represses transcription through direct, TFCOUP2-independent binding to a GC-rich response element . May also function in the P53-signaling pathway .

APPLICATION

To ensure optimal assay performance, AREX recommends conducting reagent titration tailored to each testing system for optimal detection results.

WB	1:500 - 1:1000
----	----------------

*Results are sample-specific. Please refer to your local assay conditions and test parameters for reference.

PRODUCT OVERVIEW

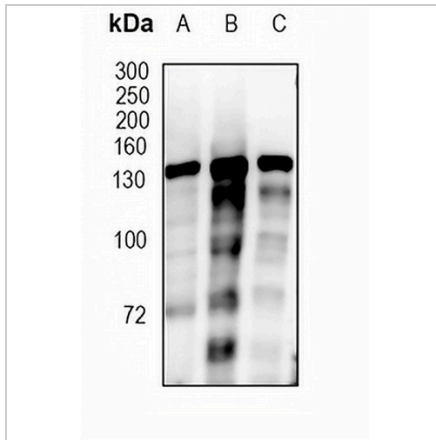
Description	Recombinant rabbit monoclonal antibody to BCL11B
Specificity	Recognizes endogenous levels of BCL11B protein
Antibody Type	Primary antibody, Recombinant
Immunogen	KLH-conjugated synthetic peptide encompassing a sequence within human BCL11B protein. The exact sequence is proprietary.
Purification	The antibody was purified by immunogen affinity chromatography.
Molecular Weight	Predicted: 95 kD; Observed: 140 kD
Form/Buffer	Liquid in PBS, pH 7.4, containing 50% glycerol, 0.2% BSA and 0.01% sodium azide.
Alternative Names	CTIP2; RIT1; B-cell lymphoma/leukemia 11B; BCL-11B; B-cell CLL/lymphoma 11B; COUP-TF-interacting protein 2; Radiation-induced tumor suppressor gene 1 protein; hRit1
Gene Symbol	BCL11B
Entrez Gene	64919(Human)
SwissProt	Q9C0K0(Human)

*AREX continuously optimizes our products. Webpage content may not reflect the latest updates. For inquiries, please contact info@arexbio.com or your local distributor.

*Clone Number, Reactivity, Source/Host and Clonality can be found in the product name and Key Features section above.

DATASHEET**BCL11B Rabbit Monoclonal Antibody(C1787)**

CAT. NO. AMA01399

DATA

Western blot analysis of BCL11B expression in U87 (A), MCF7 (B), A549 (C) whole cell lysates. (Predicted band size: 95 kD; Observed band size: 140 kD)

STORAGE

Store at 4°C short term. For long term storage, store at -20°C, avoiding freeze/thaw cycles.

NOTE

For Research Use Only. Not for diagnostic, therapeutics, prophylactic or in vivo use.