

DATASHEET

Dopamine Transporter Rabbit Monoclonal Antibody(C1798)

CAT. NO. AMA01410

KEY FEATURES

Target	Dopamine Transporter	Source / Host	Rabbit
Reactivity	Human, Mouse, Rat	Clonality	Monoclonal
Applications	WB, IP	Conjugation	Unconjugated
Form / Buffer	Liquid in PBS, pH 7.4, containing 50% glycerol, 0.2% BSA and 0.01% sodium azide.	Storage	at-20°C

BACKGROUND

Mediates sodium- and chloride-dependent transport of dopamine . Also mediates sodium- and chloride-dependent transport of norepinephrine (also known as noradrenaline) . Regulator of light-dependent retinal hyaloid vessel regression, downstream of OPN5 signaling .

APPLICATION

To ensure optimal assay performance, AREX recommends conducting reagent titration tailored to each testing system for optimal detection results.

WB	1:500 - 1:1000
IP	1:10 - 1:50

*Results are sample-specific. Please refer to your local assay conditions and test parameters for reference.

PRODUCT OVERVIEW

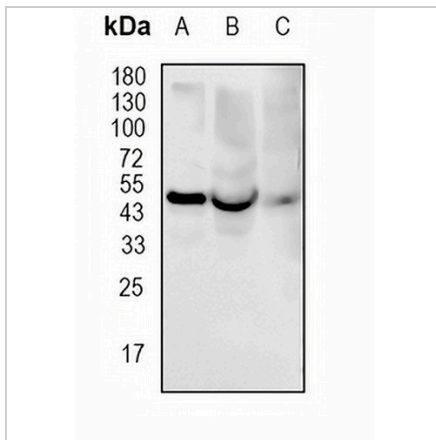
Description	Recombinant rabbit monoclonal antibody to Dopamine Transporter
Specificity	Recognizes endogenous levels of Dopamine Transporter protein
Antibody Type	Primary antibody, Recombinant
Immunogen	KLH-conjugated synthetic peptide encompassing a sequence within human Dopamine Transporter protein. The exact sequence is proprietary.
Purification	The antibody was purified by immunogen affinity chromatography.
Molecular Weight	Predicted: 68 kD; Observed: 50 kD
Form/Buffer	Liquid in PBS, pH 7.4, containing 50% glycerol, 0.2% BSA and 0.01% sodium azide.
Alternative Names	DAT1; Sodium-dependent dopamine transporter; DA transporter; DAT; Solute carrier family 6 member 3
Gene Symbol	SLC6A3
Entrez Gene	6531(Human); 13162(Mouse); 24898(Rat)
SwissProt	Q01959(Human); Q61327(Mouse); P23977(Rat)

*AREX continuously optimizes our products. Webpage content may not reflect the latest updates. For inquiries, please contact info@arexbio.com or your local distributor.

*Clone Number, Reactivity, Source/Host and Clonality can be found in the product name and Key Features section above.

DATASHEET**Dopamine Transporter Rabbit Monoclonal Antibody(C1798)**

CAT. NO. AMA01410

DATA

Western blot analysis of Dopamine Transporter expression in mouse kidney (A), rat brain (B), rat kidney (C) whole cell lysates. (Predicted band size: 68 kD; Observed band size: 50 kD)

STORAGE

Store at 4°C short term. For long term storage, store at -20°C, avoiding freeze/thaw cycles.

NOTE

For Research Use Only. Not for diagnostic, therapeutics, prophylactic or in vivo use.